

Stratford-Upon-Avon, Warwickshire, CV37

Quickmove
PROPERTIES



Price as listed

 x 2  x 2

This pre-owned Omar Oulton (35'x20') park home is perfect for those looking for a detached, easy to maintain, bungalow-style property. The home has a spacious kitchen and dining room, comfortable living room with plenty of windows, two bedrooms and a bathroom. The home has a low maintenance, private garden.

This development is situated in the picturesque village of Welford-upon-Avon, just 4 miles from Stratford-upon-Avon. The centre of the village is a designated conservation area and one of the most desirable places to live in the UK. Stratford has cinemas, pubs, restaurants, banks, takeaways, and supermarkets. The closest cities are Coventry and Birmingham, which are 10 miles and 17 miles away.

Age restriction: Over 50s

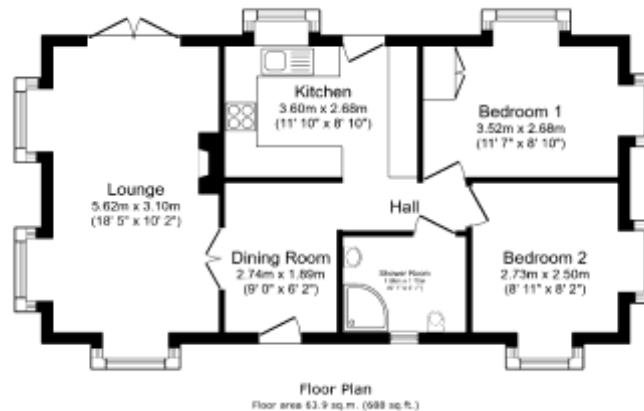
Pet friendly: Yes

Site fees (at time of listing): £234 per month

Residential license

Key Features

- Countryside views
- Enclosed garden
- Over 50s
- Part Exchange available
- Pet friendly
- Pre-owned park home
- Residential development
- Two bedrooms
- Modern home
- Community living



House to sell?

Hassle-free Property Part-Exchange is available from Quickmove Properties, with no estate agent fees, no solicitor's fees and no market uncertainty.

CONTACT US

01793 840917

advice@quickmoveproperties.co.uk

Quickmove
PROPERTIES

