

Bury St. Edmunds, Suffolk, IP28

Quickmove
PROPERTIES



Price as listed

 x 2

 x 2

This brand new, fully furnished Omar Westbury (40'x20') luxury park home is perfect for those looking for a detached, easy to maintain, bungalow-style property. The home itself boasts double glazing, gas central heating as well as a modern, fitted kitchen with appliances as well as two spacious bedrooms with an en-suite to the master bedroom.

A bus stop can be found a short walk from the park and nearby amenities, including a local shop, Sainsbury's, a pub and a doctor's surgery, are within a few miles. Only a 30-minute drive away and you'll find both the market towns of Bury St Edmunds and Thetford. Bury St Edmunds, known as the cultural and retail centre for West Suffolk is also famed for its brewing and malting activities, whilst at Thetford you can explore the quaint town marked by history, with a strong connection to nature.

Age restriction: Over 50s

Pet friendly: Yes (2 per home)

Site fees: £243.46 per month

Residential license

House to sell?

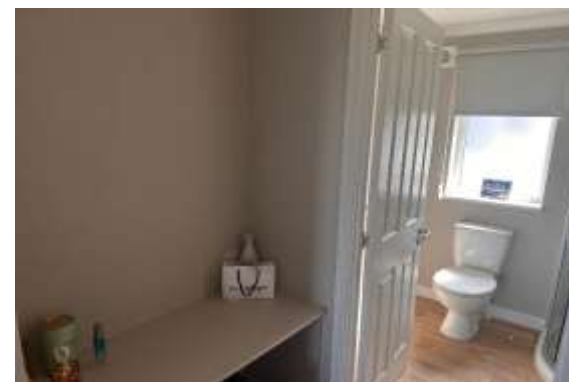
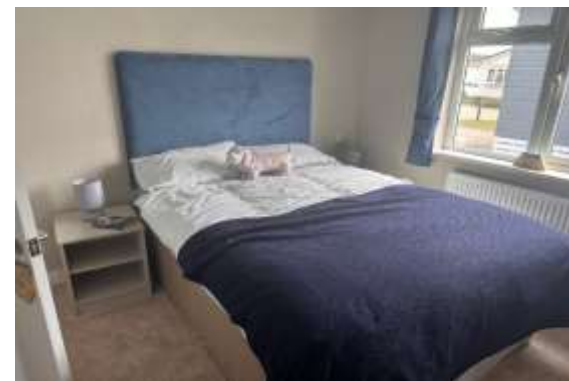
Hassle-free Property Part-Exchange is available from Quickmove Properties, with no estate agent fees, no solicitor's fees and no market uncertainty.

Key Features

- Brand new home
- Community living
- Exceptionally high specification
- Fully furnished
- Over 50s
- Part Exchange available
- Pet friendly
- Residential development



Westbury 40' x 20' 200



CONTACT US

01793 840917

advice@quickmoveproperties.co.uk

Quickmove
PROPERTIES

