

# Cheltenham, Gloucestershire, GL51

**Quickmove**  
PROPERTIES



Price as listed



x 2



x 1



This pre-owned (40'x20') park home is perfect for those looking for a detached, easy-to-maintain, bungalow-style property. The home has a kitchen, living room, two bedrooms and a bathroom. The home has a large, easy to maintain garden with three sheds, and views of the next door field. Parking is available in the residents car park.

Located on the edge of Cheltenham, this development is well located with amenities nearby. The centre of Cheltenham is just 4 miles away, with high street shopping and restaurants. Cheltenham has great transport links to the Cotswolds and the wider area of the South West. The part is located near J11 of the M5, with Gloucester on the other side.

Age restriction: Over 45s

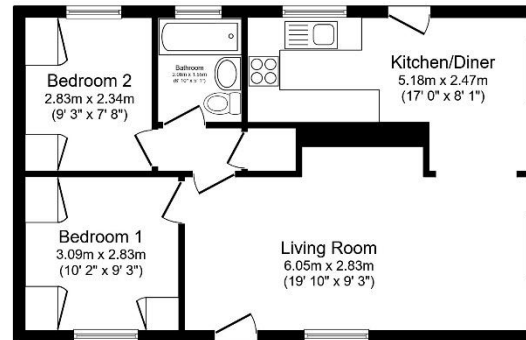
Pet friendly

Site fees (at time of listing): £131 per month

Residential license

## Key Features

- Garden Shed
- Garden space
- Over 45s
- Part Exchange Available
- Pre-owned park home
- Residential Park Home
- Two bedrooms
- Community living
- Small development
- Bus stop outside park



Total floor area: 53.4 sq.m. (575 sq.ft.) approx

This floor plan is for illustrative purposes only. It is not drawn to scale. Any measurements, floor area (including any total floor area), openings and orientation are approximate. No details are guaranteed, they cannot be relied upon for any purpose and they do not form part of any agreement. No liability is taken for any error, omission or misstatement. A party must rely upon its own inspection. Powered by www.floorplan.com



## House to sell?

Hassle-free Property Part-Exchange is available from Quickmove Properties, with no estate agent fees, no solicitor's fees and no market uncertainty.

## CONTACT US

01793 840917

advice@quickmoveproperties.co.uk

**Quickmove**  
PROPERTIES

