

# Callow End, Worcester, WR2



Price as listed



PRE OWNED Park Home (36'x12') | Residential development | Exclusive for the over 52s | Pet friendly | Village location | Gated entrance | Established development | Short drive from Worcester city centre | Part exchange available

### THE HOME

A pre-owned 36x12 Stately park home, perfect for those looking for a detached, easy-to-maintain, bungalow-style property. Built in 1988 the home has been well-maintained and enjoys a peaceful location on the park with an easily maintained garden area and lovely countryside views.

### THE PARK

This established, gated residential development is located in a village setting providing its residents with a peaceful atmosphere, while being close to city amenities. The development is exclusive for the over 52 and is pet friendly.

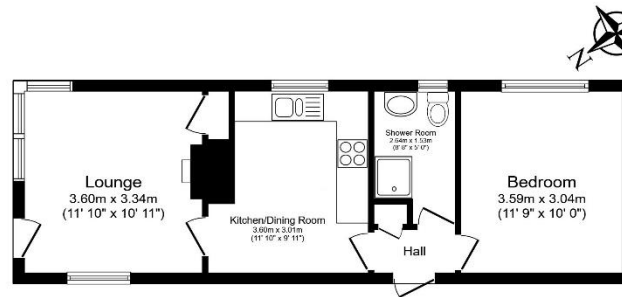
Site fees (at time of listing): £163 every 4 weeks  
Tenure: Virtual Freehold  
Council Tax Band: A

### House to sell?

Hassle-free Property Part-Exchange is available from Quickmove Properties, with no estate agent fees, no solicitor's fees and no market uncertainty.

### Key Features

- Car park on site
- All furniture included in sale
- Garden space
- One Double Bedroom
- Over 52
- Part Exchange Available
- Pet-Friendly
- Community living
- Residential Development
- Village location



Total floor area 40.4 sq.m. (435 sq.ft.) approx

This floor plan is for illustrative purposes only. It is not drawn to scale. Any measurements, floor areas (including any total floor area), openings and orientation are approximate. No details are guaranteed. They cannot be relied upon for any purpose and they do not form part of any agreement. No liability is taken for any error, omission or misstatement. A party must rely upon its own inspection(s). Powered by [www.floorplan.com](http://www.floorplan.com)



## CONTACT US

01793 840917

[advice@quickmoveproperties.co.uk](mailto:advice@quickmoveproperties.co.uk)

**Quickmove**  
PROPERTIES



**The Property  
Ombudsman**