

# Bromyard, Herefordshire, HR7



Price as listed





This pre-owned Omar Middleton (40'x20') luxury park home is perfect for those looking for a detached, easy-to-maintain, bungalow-style property. This well maintained home has a modern kitchen, utility room, a dining area and a comfortable living room with an electric fireplace. There are two bedrooms, the master has an en suite and a walk in wardrobe, there is a further family bathroom. The exterior features a garden, decking and driveway.

This residential park is built in the grounds of a historic castle. Located in a peaceful and breathtaking woodland setting, this stunning gated development has south-facing views over the Bromyard Downs and Malvern Hills. The area is renowned for its scenic beauty and many ancient towns and cities, including Hereford, Worcester, Gloucester, and Leominster, all accessible by the local bus services in Bromyard.

Age restriction: Over 45s

Pet friendly: No

Site fees: £269.38 per month

Residential license

### House to sell?

Hassle-free Property Part-Exchange is available from Quickmove Properties, with no estate agent fees, no solicitor's fees and no market uncertainty.

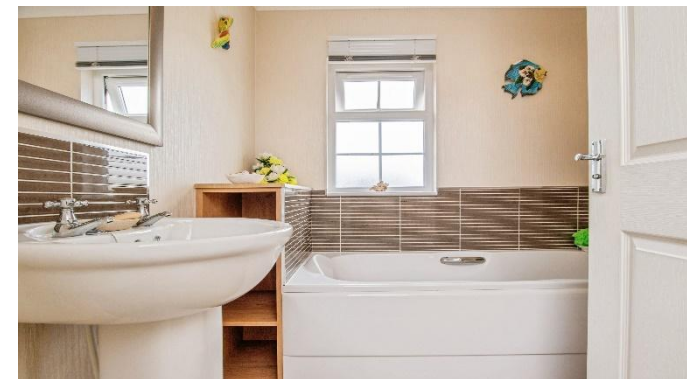
### Key Features

- Community Living
- Decking
- Garden space
- Modern design
- Over 45s
- Utility Room
- Community living
- Pre-owned park home
- Property is vacant
- Residential Development



Total floor area 87.1 sq.m. (937 sq.ft.) approx

This floor plan is for illustrative purposes only. It is not drawn to scale. Any measurements, floor areas (including any total floor area), openings and orientation are approximate. No details are guaranteed, they cannot be relied upon for any purpose and they do not form part of any agreement. No liability is taken for any error, omission or misstatement. A party must rely upon its own inspection(s). Powered by [www.bosagert.com](http://www.bosagert.com)



### CONTACT US

01793 840917

[advice@quickmoveproperties.co.uk](mailto:advice@quickmoveproperties.co.uk)

**Quickmove**  
PROPERTIES

