

Wickford, Essex, SS11

Quickmove
PROPERTIES



Price as listed

 x 3  x 2

This is a well-presented three-bedroom detached park home bungalow located on a corner plot with a large garden. The home has a new kitchen and appliances, it is a very smart home with top specifications. The open-plan kitchen, dining and living area enjoys large windows and a vaulted ceiling. The master bedroom features French doors leading to the garden, fitted wardrobes and an en suite. There are two further bedrooms and a bathroom. The spacious and private garden area includes a large decking and a patio with a shed. There is a double garage and parking for up to 5 cars.

This development is a well-established waterside park in attractive countryside surroundings. With the onsite clubhouse overlooking the river Crouch, the park is famous for its sailing, canoeing, fishing, and country walks. The park offers all the nearby essential amenities including a direct train route into London and is just a short distance from the historic town of Chelmsford.

Age restriction: Over 55s

Pet friendly: Yes

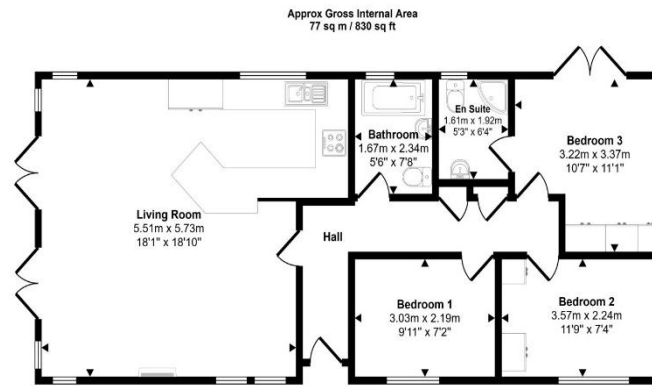
Site fees: £456.20 per month including water and sewerage

House to sell?

Hassle-free Property Part-Exchange is available from Quickmove Properties, with no estate agent fees, no solicitor's fees and no market uncertainty.

Key Features

- Clubhouse on site
- Double garage
- Decking
- Large plot
- Air conditioning in living room and bedrooms
- Part Exchange Available
- Pet-Friendly
- Pre-owned park home
- Residential Development
- Three bedrooms
- Over 55's



CONTACT US

01793 840917

advice@quickmoveproperties.co.uk

Quickmove
PROPERTIES

