

Dumfriesshire, Scotland, DG2

Quickmove
PROPERTIES



Price as listed



This brand new, modern-furnished ABI Beverley (39'x12') luxury lodge is perfect for those looking for a detached, easy to maintain, bungalow-style property. The lodge has an open plan kitchen, dining and living room, two bedrooms, an en suite and a bathroom.

This picturesque 12-month leisure development is located just 1 mile from the town of Dumfries. The park is pet friendly, gated, and has CCTV for extra security. Each home includes decking with views of the park and surrounding countryside, and parking for two cars.

The park is located just outside the town of Dumfries, which is the capital of the Dumfries & Galloway region with forests and beaches. Dumfries has a Spar, local Co-op, post office, hotels, restaurants, cafes and take-aways. Walking, cycling, fishing facilities are available across the local area. Carlisle is just 29 miles away and has all big city amenities, facilities and entertainments. Further a field is Silloth and the Lake District.

Age restriction: None

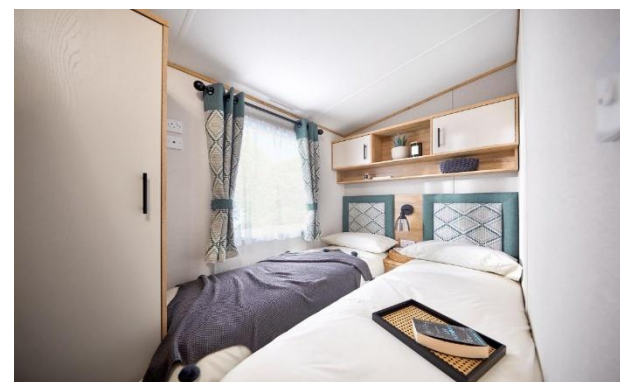
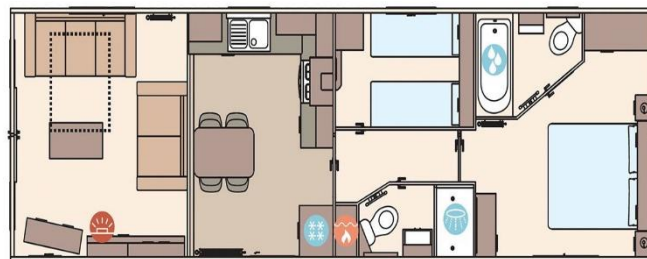
Pet friendly: Yes

Site fees: £2,500 per year

Stock images have been used, the home on site may vary.

Key Features

- 12 Month Leisure Licence
- Brand new lodges
- Countryside location
- Fully Furnished
- House buying service
- Integrated Appliances
- Parking space
- Pet-Friendly
- Private, Gated Development



CONTACT US

01793 840917

advice@quickmoveproperties.co.uk

Quickmove
PROPERTIES



The Property
Ombudsman