

Exeter, Devon, EX5

Quickmove
PROPERTIES



Price as listed

 x 2

 x 2

This brand new, modern-furnished Manor Warkton (50'x22') park home is perfect for those looking for a detached, easy to maintain, bungalow style retirement property. The home has a spacious, quality fitted kitchen with integrated appliances including oven, hob, fridge and freezer, a utility room and a comfortable living and dining room. There are two double bedrooms, an en suite and a bathroom.

Within 3 miles of the River Exe estuary and an area of outstanding natural beauty, this lovely, peaceful park has a unique location just 4 miles from the beautiful cathedral City of Exeter. Buses stop at the entrance to the park every 30 minutes. This development is ideally situated for trips to the coast, the West Country Showground (within walking distance) and many places of interest. Exeter is a major shopping centre with museums, theatres, and historical buildings to explore.

Age restriction: Over 50s

Pet friendly: Yes

Site fees: £269 per month

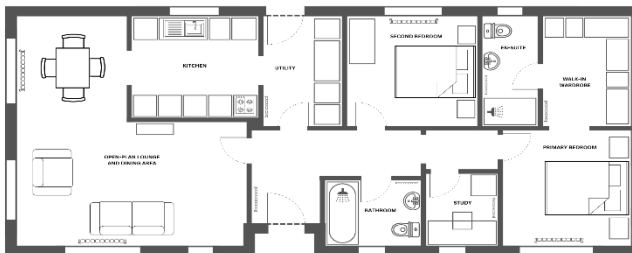
Residential license

House to sell?

Hassle-free Property Part-Exchange is available from Quickmove Properties, with no estate agent fees, no solicitor's fees and no market uncertainty.

Key Features

- Brand new home
- Community Living
- Countryside location
- Established Park
- Fully Furnished
- Over 50s
- Part Exchange Available
- Pet-Friendly
- Residential Development
- Short drive to the coast



CONTACT US

01793 840917

advice@quickmoveproperties.co.uk

Quickmove
PROPERTIES

