

Tewkesbury, Gloucestershire, GL20

Quickmove
PROPERTIES



Price as listed



This brand new, modern-furnished Willerby Kingswood (40'x20') luxury park home is perfect for those looking for a detached, easy to maintain, bungalow-style property. The home features a spacious, fully equipped kitchen and dining area, a separate living room with large windows with stunning views of the surrounding countryside. The master bedroom has a walk-in wardrobe and en-suite bathroom. There is a second bedroom with ample storage. The two bathrooms have modern stylish fittings and finishes. The home has views over the countryside and private parking.

This picturesque development is located down a country lane on the outskirts on Twyning in Gloucestershire, alongside the River Avon. Cheltenham, Worcester and Gloucester are within easy reach, providing plenty of amenities. The nearby village of Twyning offers the nearest amenities including a village shop and post office.

Age restriction: Over 50s

Pet friendly: Yes

Site fees (at time of listing): £4,000 per year

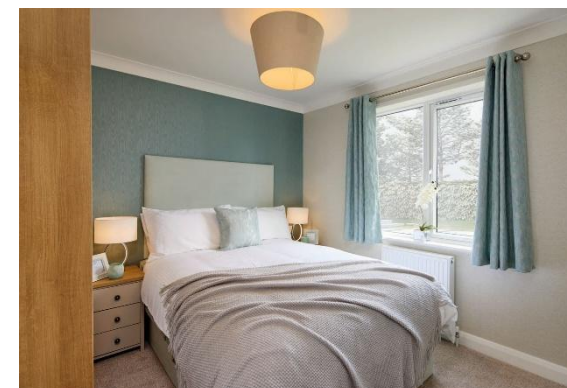
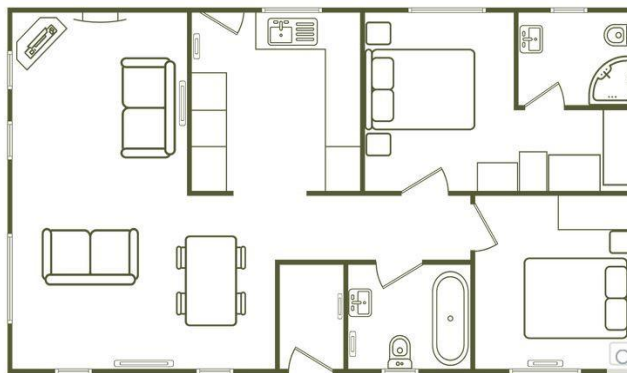
Residential license

House to sell?

Hassle-free Property Part-Exchange is available from Quickmove Properties, with no estate agent fees, no solicitor's fees and no market uncertainty.

Key Features

- Brand new home
- Countryside location
- Driveway
- Fully Furnished
- Over 50s
- Part Exchange Available
- Pet-Friendly
- Private Decking
- Residential Park Home
- Riverside Location



CONTACT US

01793 840917

advice@quickmoveproperties.co.uk

Quickmove
PROPERTIES

