

Tewkesbury, Gloucestershire, GL20



Price as listed



This pre-owned park home (48'x20') is perfect for those looking for a detached, easy-to-maintain, bungalow-style property. The home has parking and a garden space with views overlooking the countryside. The home has a galley-style kitchen with integrated appliances and a utility room. There is a dining area and a living room with an electric fireplace. There are two bedrooms, a study and two bathrooms.

This established and welcoming development is gated and exclusive for the over 45s. Backing onto farmland with far-reaching countryside views, the area offers so much to do and see. The park is located just a few miles from the historic market town of Tewkesbury. You can find local amenities here including supermarkets, doctors, a hospital, and shops.

Age restriction: Over 45s

Pet friendly

Site fees: £199.79 per month

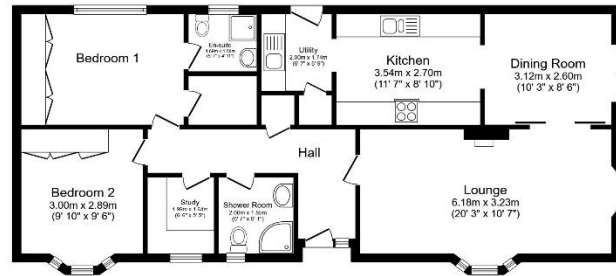
Residential license

House to sell?

Hassle-free Property Part-Exchange is available from Quickmove Properties, with no estate agent fees, no solicitor's fees and no market uncertainty.

Key Features

- Community Living
- Countryside Views
- Over 45s
- Garden space
- Gated and secure community
- Part Exchange Available
- Pets welcome
- Pre-owned park home
- Sought After Residential Park
- Two Double Bedrooms



Total floor area 90.4 m² (973 sq.ft.) approx

This floor plan is for illustrative purposes only. It is not drawn to scale. Any measurements, floor areas (including any total floor area), openings and orientation are approximate. No details are guaranteed, they cannot be relied upon for any purpose and they do not form part of any agreement. No liability is taken for any error, omission or misstatement. A party must rely upon its own inspection(s). Powered by www.floorplan.com



CONTACT US

01793 840917

advice@quickmoveproperties.co.uk

Quickmove
PROPERTIES



The Property
Ombudsman