

Barton-Upon-Humber, Lincolnshire, DN18

Quickmove  
PROPERTIES



Price as listed



This brand-new, modern-furnished (40'x20') luxury park home is perfect for those looking for a detached, easy-to-maintain, bungalow-style property. The home has a modern kitchen with integrated appliances, comfortable living and dining area, two double bedrooms, an en suite and a bathroom.

This residential development has over 18 acres of peaceful parkland, 8 of those acres are beautiful lakes with many different types of wildlife. The development is half a mile away from the market town of Barton-Upon-Humber. The park is next to the Waters Edge Nature Reserve, and a major supermarket, bus, and rail stations are within a 5-minute walk, making sure you're well-connected to the local area and beyond.

Age restriction: Over 50s

Pet Friendly

Site fees: £230.82 per month

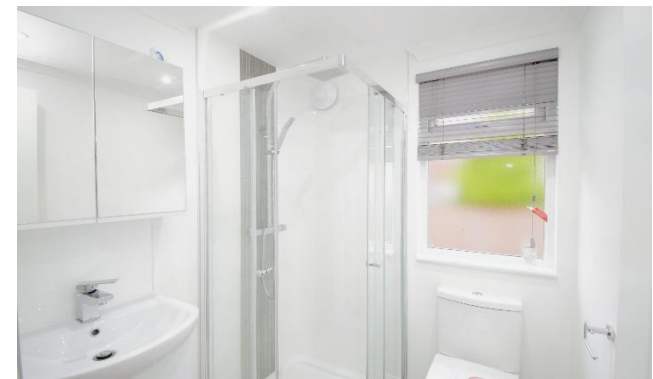
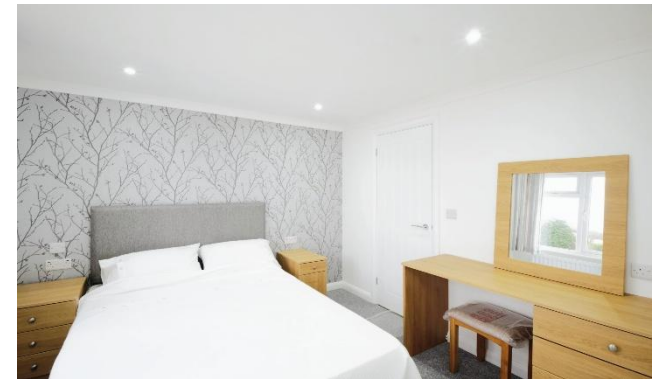
Residential license

### House to sell?

Hassle-free Property Part-Exchange is available from Quickmove Properties, with no estate agent fees, no solicitor's fees and no market uncertainty.

### Key Features

- Countryside Views
- Driveway
- Exceptionally High Specification
- Fishing lake on site
- Fully Furnished
- Over 50s
- Part Exchange Available
- Pet-Friendly
- Residential Development
- Two Bedrooms



## CONTACT US

01793 840917

[advice@quickmoveproperties.co.uk](mailto:advice@quickmoveproperties.co.uk)

**Quickmove**  
PROPERTIES

