

Defford, Worcestershire, WR8



Price as listed



This brand-new, modern-furnished Willerby Clearwater (40'x20') luxury lodge is perfect for those looking for a detached, easy-to-maintain, bungalow-style property. The lodge has an open plan layout, with a spacious kitchen with integrated appliances, dining area, and living area with door leading out to the decking. The master bedroom has an en suite and walk in wardrobe, there is a second twin bedrooms and another bathroom.

This small, secluded 12 month leisure development is beautifully presented with landscaped grounds and a gated entrance. The local pub is at the park entrance, and it's a perfect place to unwind and relax all year round. The park is located in the small village of Defford, a short drive south of Worcester. For those who enjoy the outdoors, you are just a few miles from the Malvern Hills and the Cotswolds, where you can find hiking routes and quaint small villages. Further a field are the larger towns of Cheltenham and Gloucester, and the Welsh border.

Age restriction: Over 45s

Pet friendly

Site fees: £350 per month

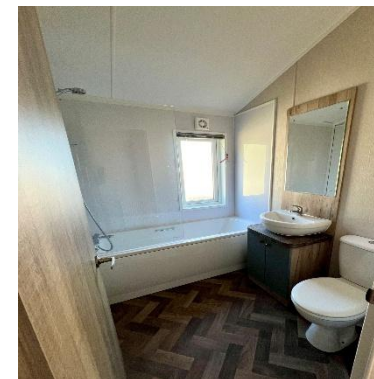
Leisure license

House to sell?

Hassle-free Property Part-Exchange is available from Quickmove Properties, with no estate agent fees, no solicitor's fees and no market uncertainty.

Key Features

- 12 Month Leisure Licence
- Brand new lodges
- Decking
- Fully Furnished
- House buying service
- Over 45s
- Private, Gated Development
- Pub on site
- River fishing permitted



CONTACT US

01793 840917

advice@quickmoveproperties.co.uk

Quickmove
PROPERTIES



The Property
Ombudsman