

# Bromyard, Herefordshire, HR7



Price as listed



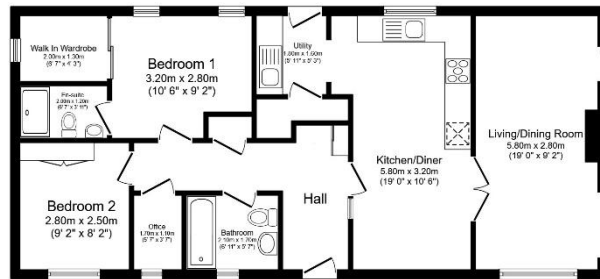
This pre-owned Willerby Delamere (45'x20') park home is perfect for those looking for a detached, easy to maintain, bungalow style retirement property in a modern secluded development. The home has a spacious kitchen with integrated appliances and utility room, there is a dining area and a living room with large windows and an electric fireplace. There are two double bedrooms, an en suite and a bathroom. The home has a garden and decking with countryside views.

This residential park is built in the grounds of a historic castle. Located in a peaceful and breathtaking woodland setting, this stunning gated development has south-facing views over the Bromyard Downs and Malvern Hills. The area is renowned for its scenic beauty and many ancient towns and cities, including Hereford, Worcester, Gloucester, and Leominster, all accessible by the local bus services in Bromyard.

Age restriction: Over 45s  
 Pet friendly: No  
 Site fees: £261.23 per month  
 Residential license

## Key Features

- Community Living
- Countryside Views
- Decking
- Garden space
- Modern design
- Over 45s
- Pre-owned park home
- Residential Development
- Two Double Bedrooms
- Very well maintained home



## House to sell?

Hassle-free Property Part-Exchange is available from Quickmove Properties, with no estate agent fees, no solicitor's fees and no market uncertainty.

## CONTACT US

01793 840917

[advice@quickmoveproperties.co.uk](mailto:advice@quickmoveproperties.co.uk)

**Quickmove**  
 PROPERTIES

**The Property**  
 Ombudsman