

Woolacombe, Devon, EX34



£290,000



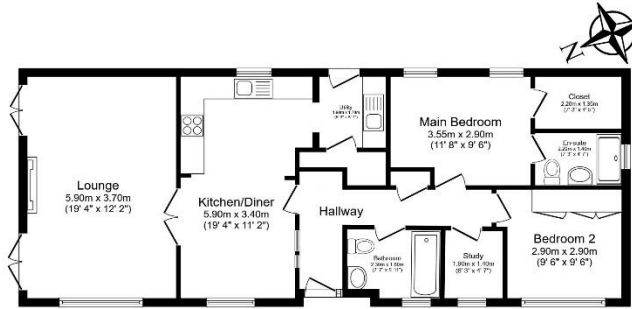
This pre-owned Willerby Delamere (50'x20') park home is perfect for those looking for a detached, easy to maintain, bungalow style retirement property in a modern secluded development. The home has a modern kitchen, dining area, and comfortable living room with large windows that provides wonderful views. There are two double bedrooms, an en suite and a bathroom. The home has a large wrap-around decking with stunning sea views. The home is on a prime front-row plot with a large wrap-around decking and uninterrupted sea views.

Set in the rolling hills of North Devon, this modern and welcoming residential park for the over 45s is a short drive from Woolacombe Bay. A bus stop is located just outside of the park, providing great transport links to the surrounding area. The village of Woolacombe is just a short walk away, there you can find your local amenities as well as pubs, restaurants, and leisure activities.

Age restriction: Over 45s
 Pet friendly: Yes
 Site fees: £322.52 per month
 Residential license

Key Features

- Coastal Location
- Countryside Walks
- Far reaching views
- Over 45s
- Part Exchange Available
- Sea Views
- Pre-owned park home
- Residential Development
- Two Bedrooms
- Wrap-around Decking



Total floor area 88.1 m² (948 sq.ft.) approx

This floor plan is for illustrative purposes only. It is not drawn to scale. Any measurements, floor areas (including any total floor area), openings and orientation are approximate. No details are guaranteed, they cannot be relied upon for any purpose and they do not form part of any agreement. No liability is taken for any error, omission or misstatement. A party must rely upon its own inspection(s). Powered by www.b2iasagent.com



House to sell?
 Hassle-free Property Part-Exchange is available from Quickmove Properties, with no estate agent fees, no solicitor's fees and no market uncertainty.

CONTACT US

01793 840917

advice@quickmoveproperties.co.uk

