

Market Rasen, Lincolnshire, LN8



£295,000



This brand-new, modern-furnished Prestige Sofia (45x22) 2-bedroom light and spacious home features a modern luxury kitchen with large windows and patio doors opening on to the private decking area. The exterior features a large private garden, driveway, and space to add a garage of your choice.

Located in a desirable countryside area, this brand new 1.75 acre residential development offers countryside views and is gated with CCTV for additional security. The park is also on the Viking Way which keen ramblers can enjoy. The rural feel is complemented by its location in the heart of a small village community with a small café, public house & church and on the main bus route to Lincoln and Cleethorpes.

The park is situated in the heart of the Lincolnshire Wolds, with Market Rasen 5 miles away on a regular bus route, stopping just outside the park with supermarkets, medical centre, pubs and restaurants. The park is also ideally placed for providing access to the A46 and close to the coastal town of Grimbsy.

Age restriction: Over 45's

Pet friendly: Yes

Site fees: £204 per month

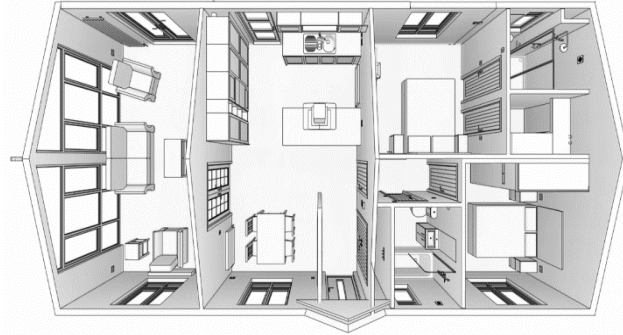
Stock images have been used, the home on site may vary.

House to sell?

Hassle-free Property Part-Exchange is available from Quickmove Properties, with no estate agent fees, no solicitor's fees and no market uncertainty.

Key Features

- Brand new home
- Countryside Views
- Dog friendly
- Driveway
- Fully Furnished
- Garden space
- Part Exchange Available
- Private
- Gated Development
- Small exclusive development



CONTACT US

01793 840917

advice@quickmoveproperties.co.uk

Quickmove
PROPERTIES

