

Wimborne, Dorset, BH21

Quickmove
PROPERTIES



Price as listed

 x 2

 x 2

This modern, well maintained park home (40'x14') is located of a gated development which backs onto the country park. The home has an open plan kitchen and living room, two bedrooms, an en suite and a bathroom. The exterior includes a driveway and an easy to maintain garden space.

These homes are set within a private gated country estate. A short distance away is the Moors Valley Country Park which provides lots of outdoor pursuits with beautiful walks, cycle paths and a golf course. The nearby market town of Wimborne boasts one of the largest and most famous open and covered markets in the south of England.

Age restriction: Over 45s

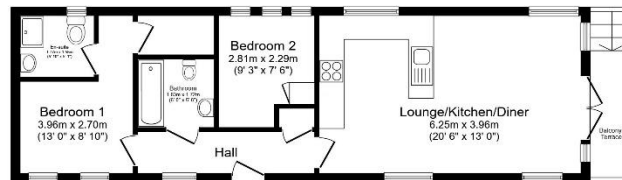
Pet friendly: Yes

Site fees (at time of listing): £300.78 per month

Residential license

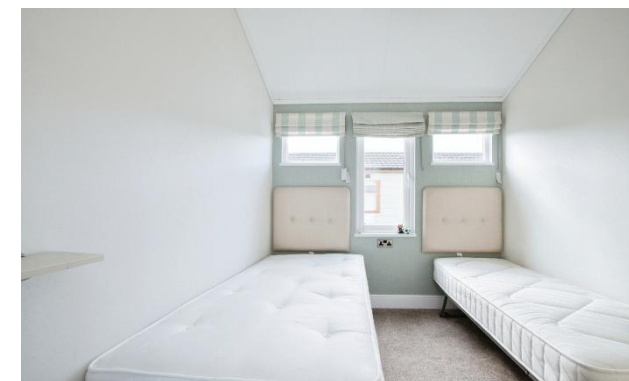
Key Features

- Countryside location
- Modern design
- Over 45s
- Part Exchange Available
- Pet-Friendly
- Pre-owned park home
- Private, Gated Development
- Residential Development
- Two Bedrooms



Total floor area 52.9 m² (570 sq.ft.) approx

This floor plan is for illustrative purposes only. It is not drawn to scale. Any measurements, floor areas (including any total floor area), openings and orientation are approximate. No details are guaranteed, they cannot be relied upon for any purpose and they do not form part of any agreement. No liability is taken for any error, omission or misstatement. A party must rely upon its own inspection(s). Powered by www.bosagent.com



House to sell?

Hassle-free Property Part-Exchange is available from Quickmove Properties, with no estate agent fees, no solicitor's fees and no market uncertainty.

CONTACT US

01793 840917

advice@quickmoveproperties.co.uk

Quickmove
PROPERTIES



The Property
Ombudsman