

Northampton, Northamptonshire, NN7



£150,000



This well presented and spacious Stately (48'x20') park home is perfect for those looking for a detached, easy-to-maintain, bungalow-style property. The home has a kitchen, living and dining area, two double bedrooms, en suite and a bathroom. The home also has a garage and garden area.

The park is located between Northampton and the market town of Towcester close to the A43. The area is well situated for outdoor leisure activities including fishing, rambling and boating. Blisworth Village has many amenities including a supermarket, newsagent and a medical practice. A regular bus service provides access to larger stores and supermarkets, in Northampton.

Age restriction: Over 25s

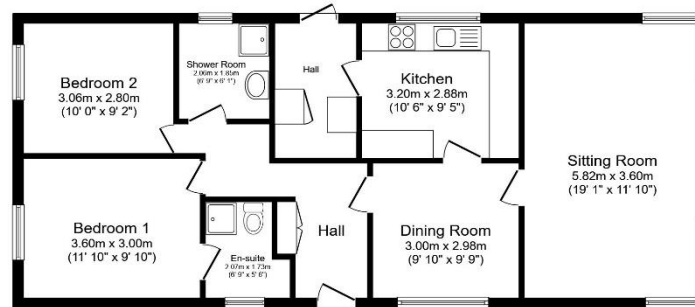
Pet friendly: No

Site fees: £176.32 per month

Residential license

Key Features

- Community Living
- Garage
- Garden space
- Over 25s
- Popular Residential Park
- Two Bedrooms
- Part exchange available



Total floor area 81.3 sq.m. (875 sq.ft.) approx

This floor plan is for illustrative purposes only. It is not drawn to scale. Any measurements, floor areas (including any total floor area), openings and orientation are approximate. No details are guaranteed, they cannot be relied upon for any purpose and they do not form part of any agreement. No liability is taken for any error, omission or misstatement. A party must rely upon its own inspection(s). Powered by www.focalsagent.com



House to sell?

Hassle-free Property Part-Exchange is available from Quickmove Properties, with no estate agent fees, no solicitor's fees and no market uncertainty.

CONTACT US

01793 840917

advice@quickmoveproperties.co.uk

Quickmove
PROPERTIES

