

Thetford, Norfolk, IP24

Quickmove
PROPERTIES



£134,950



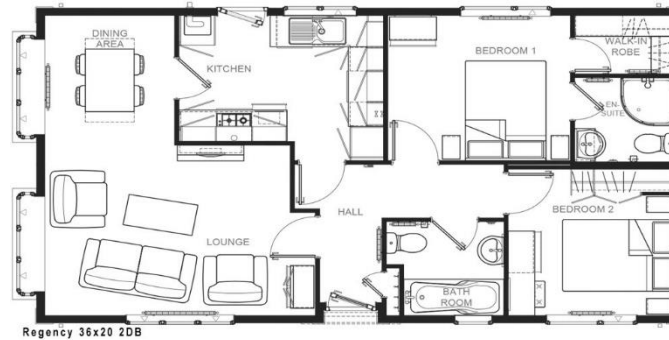
This pre-owned, part-furnished Omar Regency (36'x20') luxury park home is perfect for those looking for a detached, easy to maintain, bungalow style property. The home has a modern kitchen, dining area, comfortable living room, two bedrooms and two bathrooms. The lounge is furnished with modern and stylish furniture and a contemporary, wall mounted electric fire. The kitchen and dining area features plenty of storage and worktop space with integrated appliances including a fridge freezer, dishwasher and washing machine. The double bedrooms both feature padded headboards and free standing bedside tables, the master bedroom has an en suite and fitted wardrobes.

Situated in a peaceful rural location, this development is approximately 8 miles from the excellent facilities, entertainment and shopping offered by Bury St Edmunds and 6 miles from the smaller town of Thetford.

Age restriction: Over 45's
 Pet friendly: Yes
 Site fees: £210 per month
 Residential license

Key Features

- Community Living
- Countryside location
- Fully Fitted Kitchen
- Part Exchange Available
- Pet-Friendly
- Pre-owned park home
- Retirement Property
- Shops and amenities nearby
- White goods included



House to sell?

Hassle-free Property Part-Exchange is available from Quickmove Properties, with no estate agent fees, no solicitor's fees and no market uncertainty.

CONTACT US

01793 840917

advice@quickmoveproperties.co.uk

