

Treetops Park, Whittingham, Northumberland, NE66

Quickmove
PROPERTIES



£290,000

 x 2

 x 2

This superb Lissett Alaska (45'x22') lodge occupies an elevated position with a large wrap-around decking with glass panelling allowing uninterrupted views. The living room features large windows and French doors leading to the decking, and a wood burner. The kitchen has modern touches and an island, with a dining area looking out onto the decking. The master bedroom has an en suite with a walk-in shower and walk-in wardrobe.

This residential development consists of 12 homes, located in the peaceful setting of Whittingham. Glanton village is just 1.5 miles from the park and has a pub and post office. 10 minute drive away is Alnwick which is a large town with shops, amenities, and medical centre. The park is located on the edge of Northumberland National Park, where you can walk for miles and miles in one of the UK's most beautiful areas. The Northumberland coastline is also just 15 minute drive away.

Age restriction: Over 50s

Pet friendly: Yes

Site fees: £3,422 per year

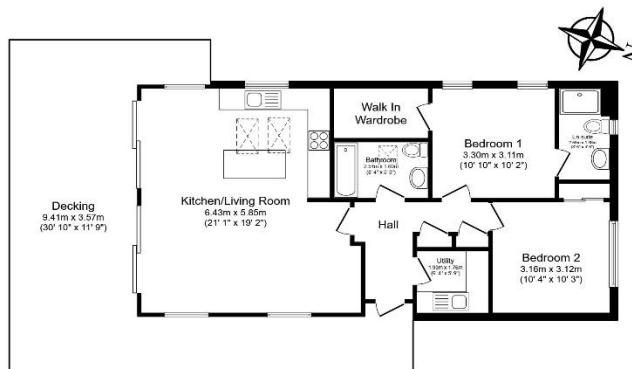
Residential license

House to sell?

Hassle-free Property Part-Exchange is available from Quickmove Properties, with no estate agent fees, no solicitor's fees and no market uncertainty.

Key Features

- Far reaching views
- Large Decked Area
- Modern design
- Two bedrooms
- Over 50s
- Part Exchange Available
- Peaceful environment
- Pet-Friendly
- Pre-owned park home
- Residential Development



Total floor area 79.5 m² (856 sq. ft.) approx

This floor plan is for illustrative purposes only. It is not drawn to scale. Any measurements, floor areas (including any total floor area), openings and orientation are approximate. No details are guaranteed, they cannot be relied upon for any purpose and they do not form part of any agreement. No liability is taken for any error, omission or misstatement. A party must rely upon its own inspection(s). Powered by www.kisaseget.com



CONTACT US

01793 840917

advice@quickmoveproperties.co.uk

