

Royale Heights, Poole, Dorset, BH16



£275,000



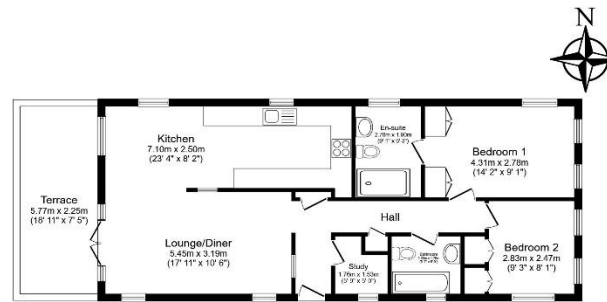
This pre-owned, modern park home (45'x20') is perfect for those looking for a detached, easy to maintain, bungalow style property. The home has an open plan kitchen, dining and living area, with large windows and doors leading onto the decking. There are two double bedrooms, an en suite and a bathroom. The exterior features decking, garden area and driveway.

This home is located on Royale Heights, a private, gated development in a wooded elevated setting with a private fishing lake on site. The development is convenient due to easy access to neighbouring towns including the traditional town of Wimborne, Poole, and Bournemouth, as well as surrounding country parks including the New Forest and Hartland Moor National Nature Reserve which offer wonderful walking trails.

Age restriction: Over 45s
 Pet friendly: Yes (2 per home)
 Site fees: £314 per month
 Residential license

Key Features

- Decking
- Garden space
- Modern design
- Over 45s
- Part Exchange Available
- Pet-Friendly
- Pre-owned park home
- Private, Gated Development
- Residential Development



Total floor area 90.5 m² (974 sq.ft.) approx

This floor plan is for illustrative purposes only. It is not drawn to scale. Any measurements, floor areas (including any total floor area), openings and orientation are approximate. No details are guaranteed, they cannot be relied upon for any purpose and they do not form part of any agreement. No liability is taken for any error, omission or misstatement. A party must rely upon its own inspection(s). Powered by www.houseagent.com



CONTACT US

01793 840917

advice@quickmoveproperties.co.uk

