

Chipperfield, Hertfordshire, WD4

Quickmove PROPERTIES



£140,000

 x 2

 x 1

This pre-owned park home is perfect for those looking for a detached, easy-to-maintain, bungalow-style property. The home has a good-sized kitchen, living and dining area, two bedrooms and a bathroom. The exterior features a garden to all sides of the home.

This residential development is tucked away in the quaint village of Chipperfield, just outside of Watford. This location offers its residents a peaceful and rural location to live. The park is in the Kings Langley area, a historic town in Hertfordshire which is part of the London commuter belt. From the park, local amenities are easily accessible by car or bus, with a bus stop at the end of the lane which runs regularly to Hemel Hempstead and Watford. Within walking distance from the park there is a tea house and a pub.

Age restriction: Over 50s

Pet friendly: No

Site fees (at time of listing): £278.33 per month

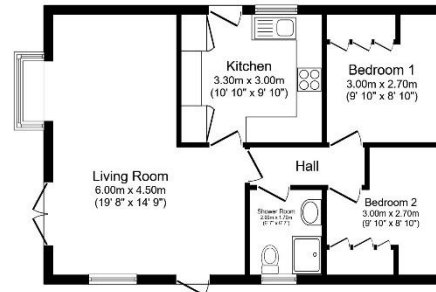
Residential license

House to sell?

Hassle-free Property Part-Exchange is available from Quickmove Properties, with no estate agent fees, no solicitor's fees and no market uncertainty.

Key Features

- Community Living
- Garden space
- Over 50s
- Part Exchange Available
- Pre-owned park home
- Residential Development
- Two Bedrooms
- Village location
- Amenities nearby



Total floor area 56.5 m² (608 sq.ft.) approx

The floor plan is for illustrative purposes only. It is not drawn to scale. Any measurements, floor areas (including any total floor area), openings and orientation are approximate. No details are guaranteed, they cannot be relied upon for any purpose and they do not form part of any agreement. No liability is taken for any error, omission or misstatement. A party must rely upon its own inspection(s). Powered by www.localagent.com



CONTACT US

01793 840917

advice@quickmoveproperties.co.uk

