

Cheadle, Cheshire, SK8



£275,000



This brand new, modern-furnished Omar Image (40'x22') luxury park home is perfect for those looking for a detached, easy to maintain, bungalow-style property. The homes feature integrated appliances, comfortable furniture, two double bedrooms and two bathrooms.

The development is located in the charming suburb of Cheadle Hume and a short distance from shops and amenities, with Bramhall station just 1.5 miles away and Handforth Dean Retail Park 2 miles away. The park is 5 miles from Stockport and 12 miles from Manchester, where you can find plenty of shopping opportunities, activities and restaurants.

Age restriction: Over 45s

Pet friendly: Yes

Site fees (at time of listing): £200 per month

Residential license

Stock images have been used, the home on site may vary.

Key Features

- Brand new home
- Countryside location
- Fully Furnished
- Mains Gas
- Over 45's
- Part Exchange Available
- Pet-friendly
- Private
- Gated Development
- Residential Development

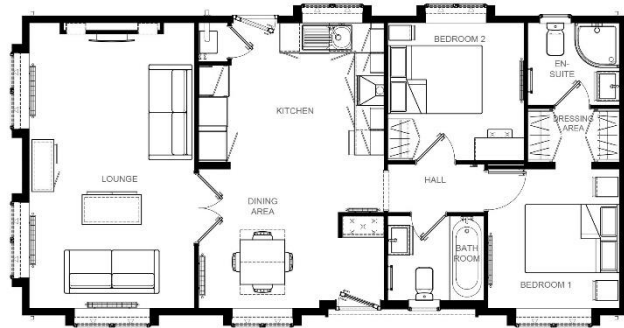


Image 40' x 20' 2DB



House to sell?

Hassle-free Property Part-Exchange is available from Quickmove Properties, with no estate agent fees, no solicitor's fees and no market uncertainty.