

Wimborne, Dorset, BH21

Quickmove
PROPERTIES



Price as listed

 x 2  x 1

A two bedroom detached park home (40'x14') is located of a gated development which backs onto the country park. The home is a Tingdene Cosgrove with a modern kitchen and dining room, a living room with an electric fireplace and two bedrooms.

The home is set within open countryside, offering secure lifestyle living for like-minded over 45s. A short distance from the park is the Moors Valley Country Park which provides lots of outdoor pursuits with beautiful walks, cycle paths and a golf course. The nearby market town of Wimborne boasts one of the largest open and covered markets in the south of England.

Age restriction: Over 45's

Pet friendly: Yes (2 per home)

Site fees: £314.62 per month

Residential license

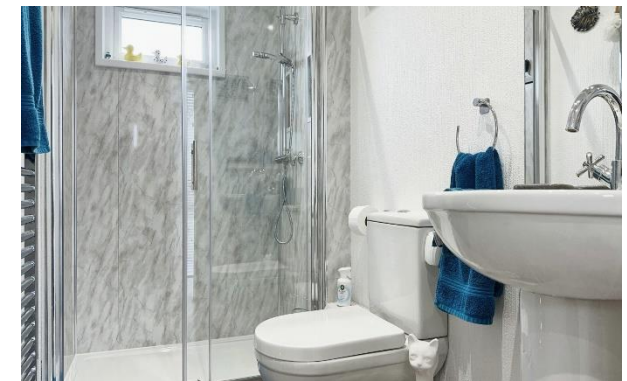
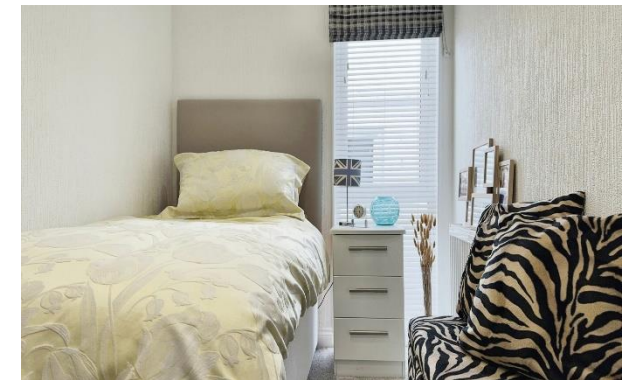
Key Features

- Countryside Views
- Over 45s
- Part Exchange Available
- Pet-Friendly
- Residential Development
- Private, gated development
- Two bedrooms
- Modern home
- Well maintained home
- Community living



Total floor area 42.1 m² (454 sq.ft.) approx

This floor plan is for illustrative purposes only. It is not drawn to scale. Any measurements, floor areas (including any total floor area), openings and orientation are approximate. No details are guaranteed, they cannot be relied upon for any purpose and they do not form part of any agreement. No liability is taken for any error, omission or misstatement. A party must rely upon its own inspections. Powered by www.focusagent.com



House to sell?

Hassle-free Property Part-Exchange is available from Quickmove Properties, with no estate agent fees, no solicitor's fees and no market uncertainty.

CONTACT US

01793 840917

advice@quickmoveproperties.co.uk

Quickmove
PROPERTIES

