

# Wokingham, Berkshire, RG40



£240,000



This pre-owned, well maintained (40'x20') park home is perfect for those looking for a detached, easy to maintain, bungalow-style property. The home has a kitchen and utility room, a living room with an electric fireplace, a dining room, two bedrooms, an en suite and a bathroom. The exterior of the home features a large garden space and driveway.

Surrounded by greenery, this home provides a relaxed and peaceful atmosphere. This park is its own private neighbourhood with gated access, as well as plenty of room and space to explore nearby country walks. This lovely residential development is located on the edge of the California Country Park and Longmoor Lake which are both well-known for their fantastic views and walks.

Age restriction: Over 45s

Pet friendly: One cat only

Site fees (at time of listing): £69.68 per week

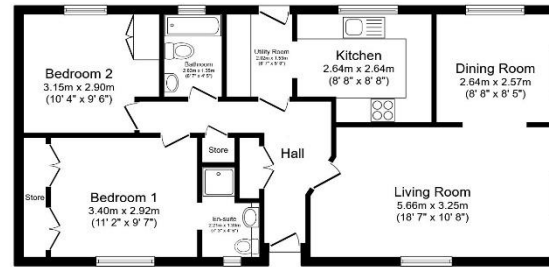
Residential license

### House to sell?

Hassle-free Property Part-Exchange is available from Quickmove Properties, with no estate agent fees, no solicitor's fees and no market uncertainty.

### Key Features

- Cat Friendly
- Community Living
- Established Park
- Garden space
- Over 45s
- Part Exchange Available
- Pre-owned park home
- Two Bedrooms
- Utility room
- Well maintained home



Total floor area 72.4 m<sup>2</sup> (779 sq.ft.) approx

This floor plan is for illustrative purposes only. It is not drawn to scale. Any measurements, floor areas (including any total floor area), openings and orientation are approximate. No details are guaranteed, they cannot be relied upon for any purpose and they do not form part of any agreement. No liability is taken for any error, omission or misstatement. A party must rely upon its own inspection(s). Powered by www.localagent.com



## CONTACT US

01793 840917

advice@quickmoveproperties.co.uk

