

Selby, Yorkshire, YO8

Quickmove
PROPERTIES



£109,000

 x 2

 x 2

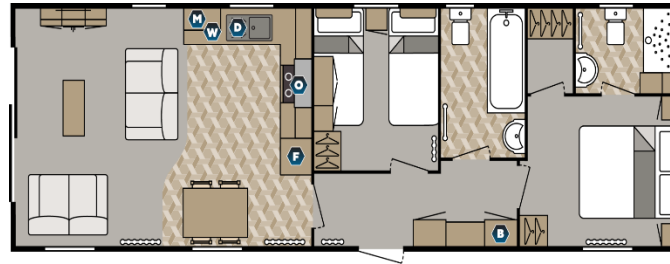
This brand-new, modern-furnished Norwood (41'x12') luxury park home is perfect for those looking for a detached, easy-to-maintain, bungalow-style property. The home features an open plan kitchen, dining and living area, two bedrooms, an en suite and a bathroom. Each home has a parking space and communal visitor parking.

This 12 month leisure development is located on the outskirts of the village of Cliffe in rural North Yorkshire. The village of Cliffe is within walking distance of the park and has a corner shop, pub and a farm shop. There is also a walking club and a golf course close by. Selby is the closest town with high street shops, medical centre, and supermarkets including M&S, Tesco, Co-op and Morrisons. York is 14 miles away offering all large city amenities and facilities, and the position of the park give easy access to the M18.

Age restriction: None
 Pet friendly: Yes
 Site fees: £3,300 per year
 12 month leisure license

Key Features

- 12 Month Leisure Licence
- Brand new home
- Fully Furnished
- House buying service
- No age restriction
- Parking space
- Pet-Friendly
- Private
- Gated Development
- Two Bedrooms



House to sell?

Hassle-free Property Part-Exchange is available from Quickmove Properties, with no estate agent fees, no solicitor's fees and no market uncertainty.

CONTACT US

01793 840917

advice@quickmoveproperties.co.uk

