

Lindow Park, Knutsford, Cheshire, WA16

Quickmove
PROPERTIES



£160,000

 x 1

 x 1

This pre-owned park home (28'x20') is perfect for those looking for a detached, easy-to-maintain, bungalow-style property. The home has a lovely open plan layout, with a kitchen leading to the living and dining area. There is a double bedroom and a bathroom with a shower. The exterior features a large private garden with a lawn area, patio, and a shed. The new four-man hot tub is also included.

Surrounded by rolling countryside, Lindow Court Park is spread over 10 acres of landscaped parkland it offers access to rural walks while also enjoying proximity to Wilmslow, and within the Golden Triangle of Cheshire. The Golden Triangle (sometimes called the Footballer Belt) is an area of affluent small towns and villages. The exact three points of the triangle are generally considered to be Alderley Edge, Prestbury, and Wilmslow. Lindow Park is close to the historic town of Knutsford and is convenient for reaching Manchester, Liverpool and the Northwest.

Age restriction: Over 45

Pet friendly: Yes

Site fees: £197.81 per month, including water Council Tax Band A (Payable to Cheshire East)

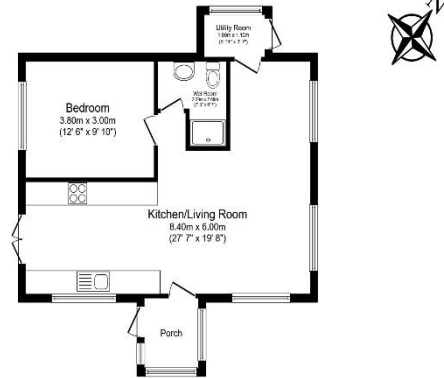
Residential license

House to sell?

Hassle-free Property Part-Exchange is available from Quickmove Properties, with no estate agent fees, no solicitor's fees and no market uncertainty.

Key Features

- Countryside location
- Established Park
- Private garden space
- Over 45s
- Pet-Friendly
- Hot Tub
- Part Exchange Available
- Pre-owned park home
- Residential Development
- Well maintained home



Total floor area 55.5 sq.m. (598 sq.ft.) approx
This floor plan is for illustrative purposes only. It is not drawn to scale. Any measurements, floor areas (including any total floor area), openings and orientation are approximate. No details are guaranteed, they cannot be relied upon for any purpose and they do not form part of any agreement. No liability is taken for any error, omission or misstatement. A party must rely upon its own enquiries. Powered by www.brokeragent.com



CONTACT US

01793 840917

advice@quickmoveproperties.co.uk

