

Herne Bay, Kent, CT6



£275,000



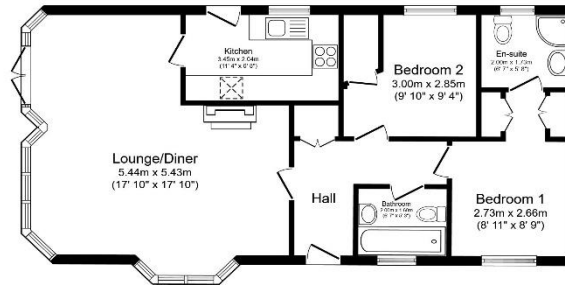
This is a two double bedroom (42'x20') Omar Sandringham home situated on a corner plot with a rear garden backing onto fields, a further decked patio area to the side, outside shed and driveway with parking for 2 cars. The home has a modern kitchen, a comfortable living room with patio doors and an electric fireplace. There are two double bedrooms, an en suite to the master, and a family bathroom.

The park is located on the stunning Kent coastline. This development offers a wonderful coastal location, and residents have access to various facilities including an indoor swimming pool, a coffee lounge and tea gardens. Many beautiful coastal walks lead directly from the development and numerous other pursuits nearby such as fishing, horse riding, cycling, sailing and golf.

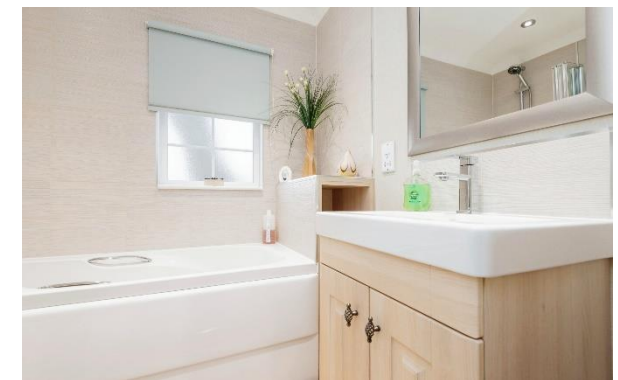
Age restriction: Over 45's
 Pet friendly: Yes
 Site fees: £268.15 per month
 Residential license

Key Features

- Decking
- Gated and secure community
- Leisure facilities onsite
- Outstanding coastal location
- Part Exchange Available
- Pets welcome
- Popular Residential Park
- Pre-owned park home
- Two Bedrooms
- Well maintained home



Total floor area 69.7 m² (751 sq.ft.) approx
 This floor plan is for illustrative purposes only. It is not drawn to scale. Any measurements, floor areas (including any total floor area), openings and orientation are approximate. No details are guaranteed, they cannot be relied upon for any purpose and they do not form part of any agreement. No liability is taken for any error, omission or misstatement. A party must rely upon its own inspection(s). Powered by www.floorplan.com



House to sell?
 Hassle-free Property Part-Exchange is available from Quickmove Properties, with no estate agent fees, no solicitor's fees and no market uncertainty.

CONTACT US
 01793 840917
advice@quickmoveproperties.co.uk

