

# Lancaster, Lancashire, LA2

**Quickmove**  
PROPERTIES



Price as listed

 x 2

 x 2

This brand new, modern-furnished Atlas Sherwood (41'x13') luxury park home is perfect for those looking for a detached, easy to maintain, bungalow-style property. The home has an open plan kitchen, living and dining area, with doors leading onto the decking. There are also two bedrooms and two bathrooms.

This 12-month leisure development is set in a peaceful countryside location in the village of Slyne. Facilities on the park include a launderette, Wi-Fi, CCTV and a 24-hour on-site manager. The village of Slyne has amenities including a local shop. The closest town is Halton 1.5 miles away, where you can find supermarkets and the nearest medical centre. Lancaster is 4 miles away being the closest city with all large city entertainment and high street shops. Morecombe is 5 miles away offering all large town facilities and beaches. Further afield is the Lake District, with stunning scenery, walking routes and villages.

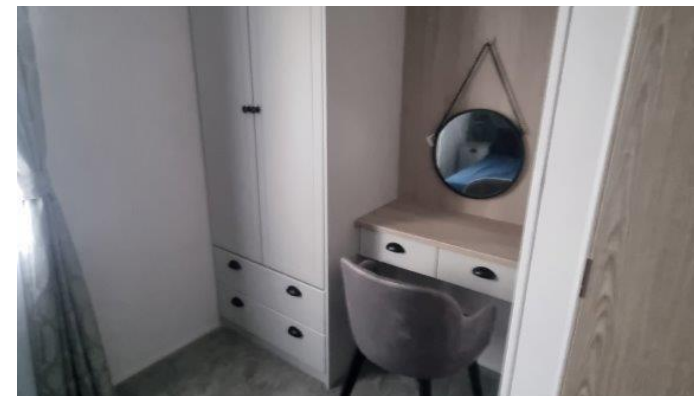
Age restriction: None  
 Pet friendly: Yes  
 Site fees: £2,888 per year  
 12 month leisure license

### House to sell?

Hassle-free Property Part-Exchange is available from Quickmove Properties, with no estate agent fees, no solicitor's fees and no market uncertainty.

### Key Features

- 12 Month Leisure Licence
- Brand new home
- Exceptionally High Specification
- Fully Furnished
- House-buying service
- No age restriction
- Parking space
- Pet-Friendly
- Two Bedrooms
- Village location



### CONTACT US

01793 840917

[advice@quickmoveproperties.co.uk](mailto:advice@quickmoveproperties.co.uk)

**Quickmove**  
 PROPERTIES

