

Broadway, Worcestershire, WR12

Quickmove  
PROPERTIES



£250,000



This superbly presented Omar Regency (40'x20') park home is situated on a sought-after residential park. This contemporary home offers spacious modern living including modern kitchen, two double bedrooms, an en suite shower room, outside private garden space and a driveway.

This beautiful home is located on a popular park, with landscaped grounds in a village setting on the edge of the Cotswolds. The park benefits from leisure community facilities such as an activities hall, bowling green, tennis court, countryside walks, and an indoor pool. Situated just ten minutes from the charming village of Broadway, this residential park is close enough for residents to make the most of the shops, cafes and a post office while still enjoying the privacy of the park.

Age restriction: Over 50s

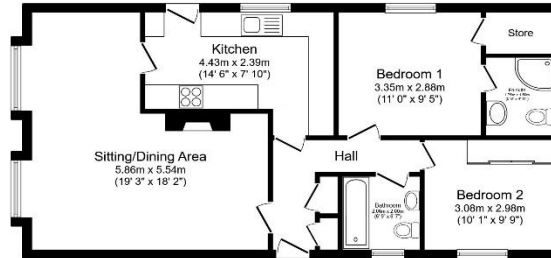
Pet friendly: Yes

Site fees: £202.79 per month

Residential license

## Key Features

- Bus stop at park entrance
- Garden space
- Leisure facilities onsite
- Over 50s
- Part Exchange Available
- Pet-Friendly
- Pre-owned park home
- Residential Development
- Two Bedrooms
- Well maintained home



Total floor area 72.7 sq.m. (783 sq.ft.) approx

This floor plan is for illustrative purposes only. It is not drawn to scale. Any measurements, floor areas (including any total floor area), openings and orientation are approximate. No details are guaranteed, they cannot be relied upon for any purpose and they do not form part of any agreement. No liability is taken for any error, omission or misstatement. A party must rely upon its own inspection(s). Powered by [www.b2i.co.uk](http://www.b2i.co.uk)



### House to sell?

Hassle-free Property Part-Exchange is available from Quickmove Properties, with no estate agent fees, no solicitor's fees and no market uncertainty.

## CONTACT US

01793 840917

[advice@quickmoveproperties.co.uk](mailto:advice@quickmoveproperties.co.uk)

**Quickmove**  
PROPERTIES

