

Fowey, Cornwall, PL23



£294,995



This brand new, modern-furnished Prestige Burleigh (40'x20') luxury park home is perfect for those looking for a detached, easy to maintain, bungalow-style property. The landscaped exterior boasts private driveway for 2 cars and stunning countryside views from the lounge and the wrap-around decking. There are two double bedrooms, a family bathroom and an en suite.

This development will feature 30 homes in total, a mixture of leisure and residential, and currently has a selection of homes and bases, with 2 residential homes occupying premium plots available for immediate occupancy. Located a short distance from Fowey, a popular port town in Cornwall, this park offers picturesque and peaceful living.

Age restriction: Over 45s

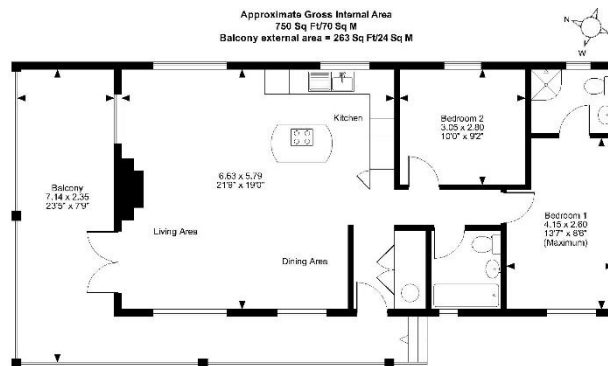
Pet friendly: 2 per home

Site fees (at time of listing): £2,495 per year

Residential license

Key Features

- Brand new home
- Coastal Location
- Community Living
- Fully Furnished
- Over 45's
- Parking for 2 cars
- Part Exchange Available
- Pet-friendly
- Residential and Leisure Park
- Town facilities nearby



FOR ILLUSTRATIVE PURPOSES ONLY - NOT TO SCALE
The position & size of doors, windows, appliances and other features are approximate only.
© ehouse. Unauthorised reproduction prohibited. Drawing ref. cgr651649335



House to sell?

Hassle-free Property Part-Exchange is available from Quickmove Properties, with no estate agent fees, no solicitor's fees and no market uncertainty.

CONTACT US

01793 840917

advice@quickmoveproperties.co.uk

Quickmove
PROPERTIES



The Property
Ombudsman