

Woolacombe, Devon, EX34



£209,995



This home is perfect for those looking for a detached, easy to maintain, bungalow style retirement property in a modern secluded development. This top of the range park home is designed to a high, luxury standard with an intelligent floor plan. The home features a modern kitchen with integrated appliances, a comfortable living area and two bedrooms.

Set in the rolling hills of North Devon, this modern and welcoming residential park for the over 50s is within walking distance from Woolacombe Bay. A bus stop is located just outside of the park, providing great transport links to the surrounding area. The village of Woolacombe is just a short walk away, there you can find your local amenities as well as pubs, restaurants, and leisure activities.

Age restriction: Over 50s

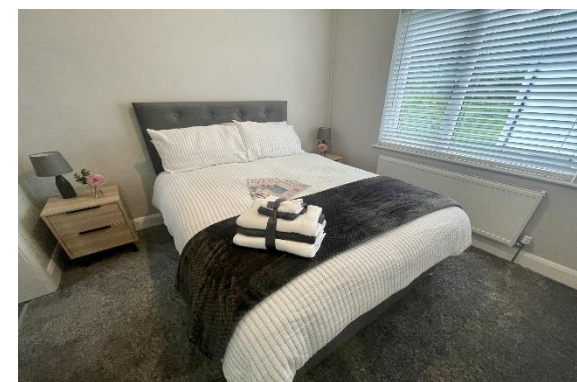
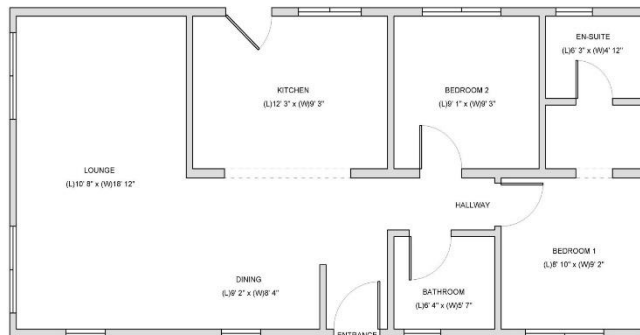
Pet friendly: Yes

Site fees: £291.21 per month

Residential license

Key Features

- Brand new home
- Coastal Location
- Countryside location
- Part exchange available
- Exceptionally High Specification
- Fully Furnished
- Modern design
- Over 45s
- Residential Development



House to sell?

Hassle-free Property Part-Exchange is available from Quickmove Properties, with no estate agent fees, no solicitor's fees and no market uncertainty.

CONTACT US

01793 840917

advice@quickmoveproperties.co.uk

