

Meadow View Park, Silloth, Cumbria, CA7

Quickmove
PROPERTIES



£185,000



This is a very well presented two double bedroom park home bungalow (40'x20') located on this sought after residential park for the over 50's. The home boasts an open plan kitchen, living and dining area, two double bedrooms, an en suite and a bathroom. The home is on a generous plot with a driveway and detached garage to the side.

At Meadow View Park, complimentary use of the leisure facilities at the nearby holiday park is available for residents, including a heated swimming pool and gym, and a clubhouse with entertainment. The park is set in tranquil grounds only 100m from the sea in the coastal town of Silloth-on-Solway, just a short drive from the Lake District.

Age restriction: Over 50s

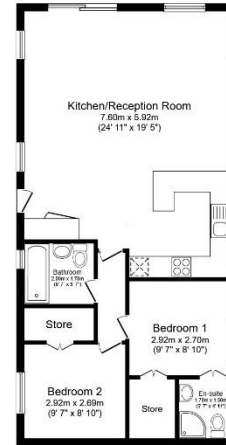
Pet friendly: Yes

Site fees: £204.11 per month

Residential license

Key Features

- Access to leisure facilities
- Garage and Driveway
- Garden space
- Open Plan Layout
- Over 50s
- Part Exchange Available
- Pet-Friendly
- Pre-owned park home
- Residential Development
- Two Double Bedrooms



House to sell?

Hassle-free Property Part-Exchange is available from Quickmove Properties, with no estate agent fees, no solicitor's fees and no market uncertainty.

CONTACT US

01793 840917

advice@quickmoveproperties.co.uk

