

# Poulton Le Fylde, Lancashire, FY6

**Quickmove**  
PROPERTIES



£170,000

 x 2

 x 2

This brand new, modern-furnished luxury park home (40'x20') features an open plan kitchen, living and dining area, two bedrooms and two bathrooms. The home has lovely views over the park and the surrounding countryside.

This 12-month leisure development is situated in the stunning Lancashire countryside. The development is pet friendly and is exclusive for the over 50s. Located in a popular area the development has panoramic view across the Wyre Estuary.

The development is situated close to Poulton-Le-Fylde, a picturesque, historic market town. Poulton has all town facilities including Tesco, Subway, WH Smith, Nisa, Co-op and a medical centre. Blackpool is the next closest town just 10 miles away offering entertainment, and beaches. Lancaster is the nearest city 15 miles away affording all city amenities and facilities.

Age restriction: Over 50's

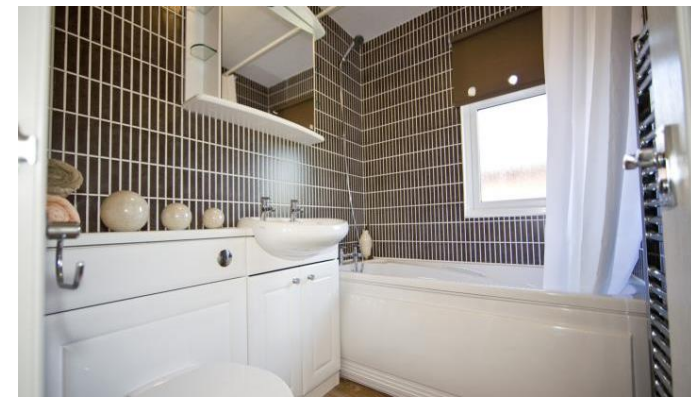
Pet friendly: Yes

Site fees: £3,500 per year

Stock images have been used, the home on site may vary

### Key Features

- 12 Month Leisure Licence
- Brand new home
- Fully Furnished
- House buying service
- Over 50s
- Parking space
- Pet-Friendly
- Rural Location
- Town facilities nearby
- Two Bedrooms



### House to sell?

Hassle-free Property Part-Exchange is available from Quickmove Properties, with no estate agent fees, no solicitor's fees and no market uncertainty.

### CONTACT US

01793 840917

[advice@quickmoveproperties.co.uk](mailto:advice@quickmoveproperties.co.uk)

**Quickmove**  
PROPERTIES

