

Congleton, Cheshire, CW12



£210,000



This brand new, modern-furnished Omar Bespoke (40'x20') luxury park home is perfect for those looking for a detached, easy to maintain, bungalow-style property. The home has an open-plan kitchen, living and dining room, two bedrooms, an en suite and a bathroom.

This lovely, 12-month leisure development is set in 30 acres of an ancient country estate in the heart of the Cheshire countryside. For added security, the park is gated and there is CCTV. There are two lakes on-site with the smaller lake offering fishing facilities. The park is home to wildlife including rabbits, deer and foxes.

The Peak District is under an hour's drive from the development, and the towns of Congleton and Macclesfield are just a short drive away. Manchester is further afield, an hour away by car. Closer by, you'll find plenty of amenities in Gawsworth, Prestbury, Wilmslow and Alderley Edge.

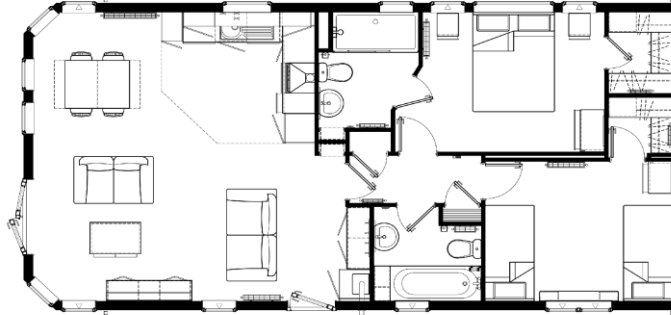
Age restriction: None
Pet friendly: Yes
Site fees: £4,950 per year
12-month leisure license

House to sell?

Hassle-free Property Part-Exchange is available from Quickmove Properties, with no estate agent fees, no solicitor's fees and no market uncertainty.

Key Features

- 12 Month Leisure Licence
- 30 acre park
- Brand new home
- Countryside location
- Fishing lake on site
- Fully Furnished
- House buying service
- Parking space
- Pet-Friendly
- Private



CONTACT US

01793 840917

advice@quickmoveproperties.co.uk

Quickmove
PROPERTIES

