

Prudhoe, Northumberland, NE42



£115,000



This brand new, modern-furnished Victory Riverwood (40'x13') luxury park home is perfect for those looking for a detached, easy to maintain, bungalow-style property. The home has an open plan kitchen, dining and living area, two bedrooms, an en suite and a family bathroom. The home also has parking for two cars.

Set in the Northumberland rolling hills and by the River Tyne, this 12-month leisure development has a range of lodges available. There is no age restriction here and pets are welcome. Park homes are designed to the highest possible specifications, with premium fixtures and fittings. This family run development is just a short distance away from Newcastle where you can enjoy shopping, site seeing and entertainment. Locally, residents can enjoy a variety of river walks, bustling market towns, cycling routes, farms and luxury award-winning golf courses.

Age restriction: None

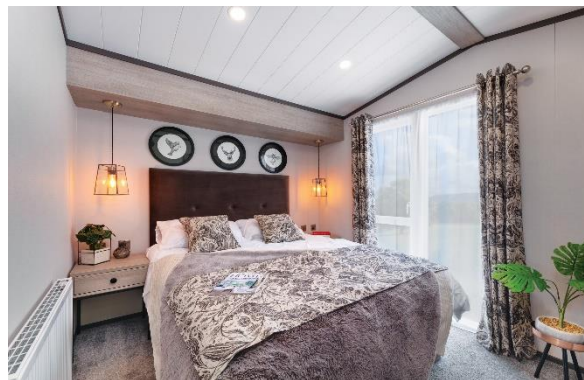
Pet friendly: Yes

Site fees: £2650 plus VAT

Stock images have been used, the home on site may vary

Key Features

- 12 Month Leisure Licence
- Brand new home
- Close To Nearby Amenities
- Fully Furnished
- Home buying service
- Integrated Appliances
- Landscaped grounds
- No age restriction
- Parking for two cars
- Pet-Friendly



House to sell?

Hassle-free Property Part-Exchange is available from Quickmove Properties, with no estate agent fees, no solicitor's fees and no market uncertainty.

CONTACT US

01793 840917

advice@quickmoveproperties.co.uk

Quickmove
PROPERTIES

