

Wisbech, Cambridgeshire, PE14



£185,000



This luxury, fully-furnished Omar Newmarket park home (38x20) is perfect for those looking for a detached, easy to maintain, bungalow style retirement property. The home features a modern kitchen with integrated appliances and a dining area, a modern and comfortable lounge suite with an electric fire point. The home has two double bedrooms with modern furniture, the master bedroom also features an en-suite bathroom.

This development is located a short distance from the market town of Wisbech, famous for its Georgian architecture and elegant buildings. In Wisbech, you can find high street shops and small boutiques as well as Wisbech Castle which was originally built in 1072 and is a local landmark. For golf lovers, Thorney Lakes Golf Club is nearby and provides a wonderful day out. Nearby is Norfolk and 5 miles north is Lincolnshire.

Age restriction: Over 50s

Pet friendly: Yes

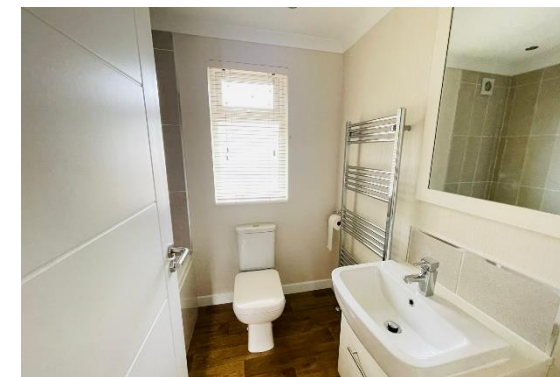
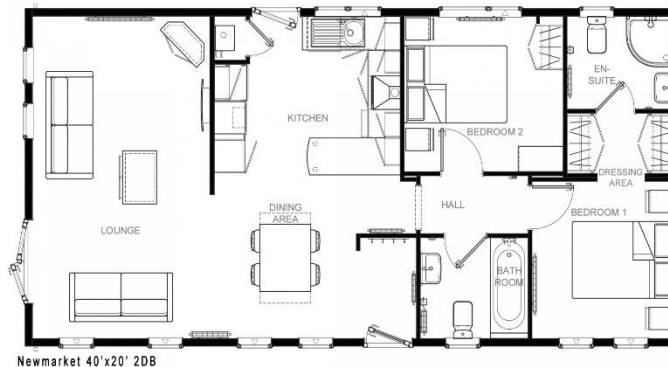
Site fees: £225 per month

Residential license

Stock images have been used, the home on-site may vary.

Key Features

- Brand new home
- Community Living
- Fully Furnished
- Integrated Appliances
- Over 50's
- Parking for 2 cars
- Part Exchange Available
- Pet-friendly
- Residential Development
- Rural Location



House to sell?

Hassle-free Property Part-Exchange is available from Quickmove Properties, with no estate agent fees, no solicitor's fees and no market uncertainty.

CONTACT US

01793 840917

advice@quickmoveproperties.co.uk

