

# Ferndown, Dorset, BH22



£235,000



This brand-new Omar Image (41'x19') luxury park home is perfect for those looking for a detached, bungalow-style property. The home features a fully fitted kitchen, a comfortable living area, two bedrooms and two bathrooms.

With all its modern amenities this is a select established park approximately 1 mile from Ferndown. Exclusive for the over 50s, conveniently located to local amenities, with a bus stop near by. A short drive away from the unrivaled timeless beauty of the New Forest with its quaint villages and famous ponies. Ferndown is just a mile away where there are local shops, doctors, dentist and a library, etc.

Age restriction: Over 50s

Pet friendly: No

Site fees: £266 per month

Residential license

### Key Features

- Over 50's
- Part Exchange Available
- Pre-owned park home
- Residential Park
- Retirement Property
- Semi-Retired and Retired Only
- Shops and amenities nearby
- Two Bedrooms
- Unfurnished

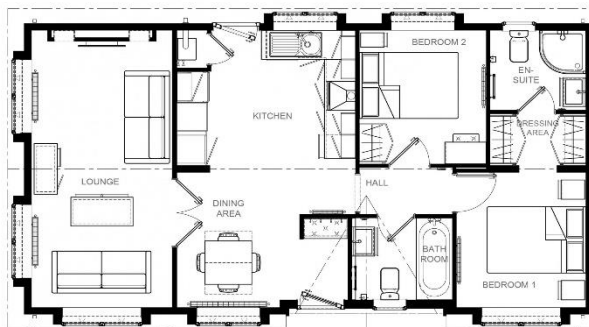
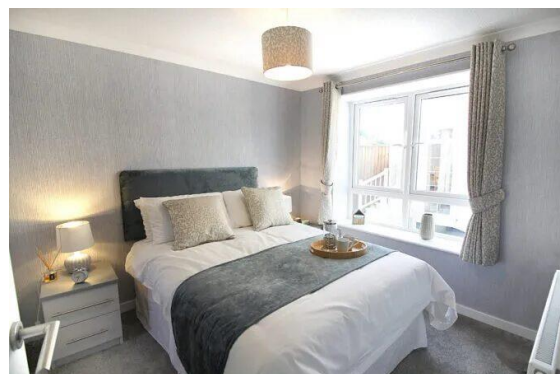


Image 36' x 20' 2DB



### House to sell?

Hassle-free Property Part-Exchange is available from Quickmove Properties, with no estate agent fees, no solicitor's fees and no market uncertainty.

### CONTACT US

01793 840917

[advice@quickmoveproperties.co.uk](mailto:advice@quickmoveproperties.co.uk)

