

Lechlade, Gloucestershire, GL7

Quickmove
PROPERTIES



£235,000



This pre-owned park home is perfect for those looking for a detached, easy to maintain, bungalow-style retirement property. This spacious two double bedroom detached park home bungalow (45'x22') is situated on a corner plot within this sought-after residential park. The home offers an en-suite, a modern kitchen with utility, a small garden, and a driveway.

This development is exclusive for the over 50s, it's pet friendly and has a part-time on-site Warden who looks after the park. The development is in the beautiful market town of Lechlade-on-Thames in Gloucestershire, just on the southern edge of the Cotswolds. With an abundance of amenities and services under a mile away and countryside all around.

Age restriction: Over 50s

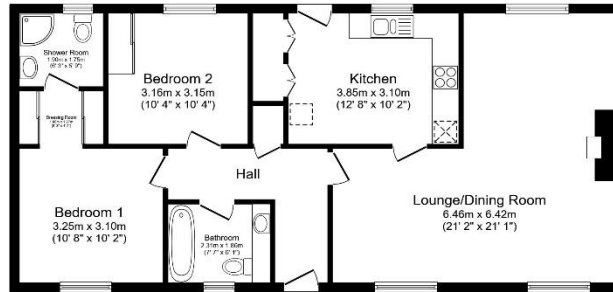
Pet friendly: Yes (2 dogs + 1 cat)

Site fees: £200.42 per month

Residential licence

Key Features

- Corner plot
- En-suite shower room
- Modern kitchen with utility
- Over 50's
- Pet-friendly
- Pre-owned park home
- Private driveway
- Residential park
- Sought after location
- Two double bedrooms



Total floor area 86.8 sq.m. (934 sq.ft.) approx

This floor plan is for illustrative purposes only. It is not drawn to scale. Any measurements, floor areas (including any total floor area), openings and orientation are approximate. No details are guaranteed. They cannot be relied upon for any purpose and they do not form part of any agreement. No liability is taken for any error, omission or misstatement. A party must rely upon its own inspection. Powered by www.houseagent.com



House to sell?

Contact Quickmove for a free, no-obligation Part-Exchange valuation on this home. Enjoy a hassle-free move, with no estate agents' fees or solicitors to pay. You even get to keep the keys to your existing property for 2 weeks after completion, so you can move out at your leisure.

CONTACT US

01793 840917

advice@quickmoveproperties.co.uk

Quickmove
PROPERTIES

