

# Liskeard, Cornwall, PL14



£219,000



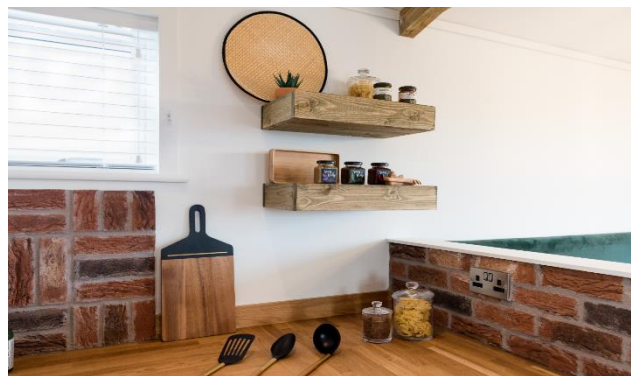
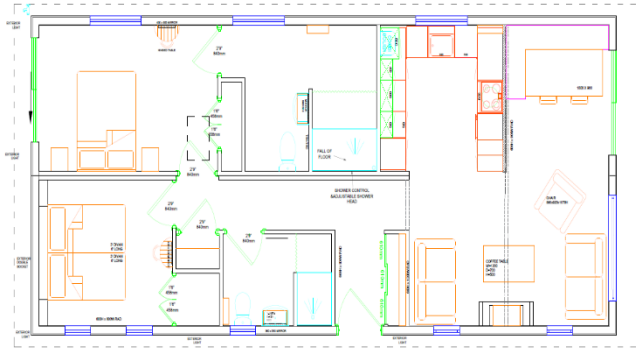
This brand new, modern-furnished leisure home is perfect for those looking for a detached, easy to maintain, bungalow style property. The home boasts a private decking, garden area and 2 parking spaces and is ready to occupy and is fully furnished, designed and hand finished. The open plan living room features two comfortable two-seater sofas with modern furniture and fireplace. The kitchen features a red brick surround and natural oak work tops, with patio doors ensure easy access to the exterior of the home and allow for an abundance of natural light to flow in.

The development is in a rural setting on the edge of the picturesque village of Pensilva providing immediate access to the shops, playing fields and a community center with gym, function facilities with bar, cafe, and post office.

Age restriction: None  
 Pet friendly: Yes  
 Site fees: £1800 per year  
 12-month leisure license

### Key Features

- 12 Month Leisure Licence
- Brand new home
- Exceptionally High Specification
- Pets Welcome
- Private Decking
- Ready to occupy
- Shops and amenities nearby



### House to sell?

Hassle-free Property Part-Exchange is available from Quickmove Properties, with no estate agent fees, no solicitor's fees and no market uncertainty.

### CONTACT US

01793 840917

[advice@quickmoveproperties.co.uk](mailto:advice@quickmoveproperties.co.uk)

