

Andrew Stevens

Estate & Letting Agents



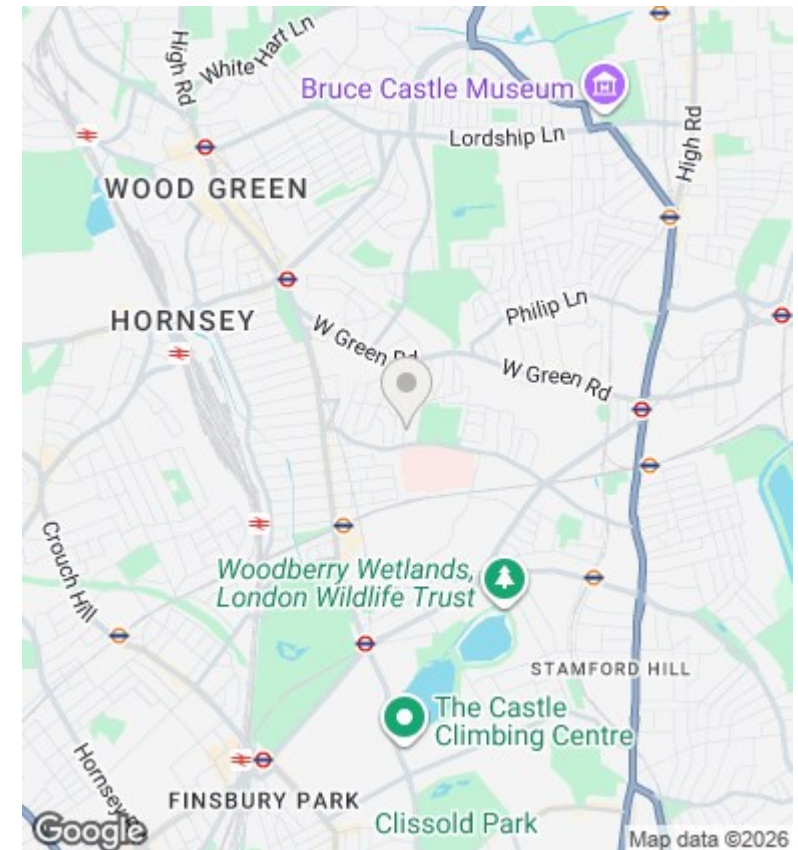
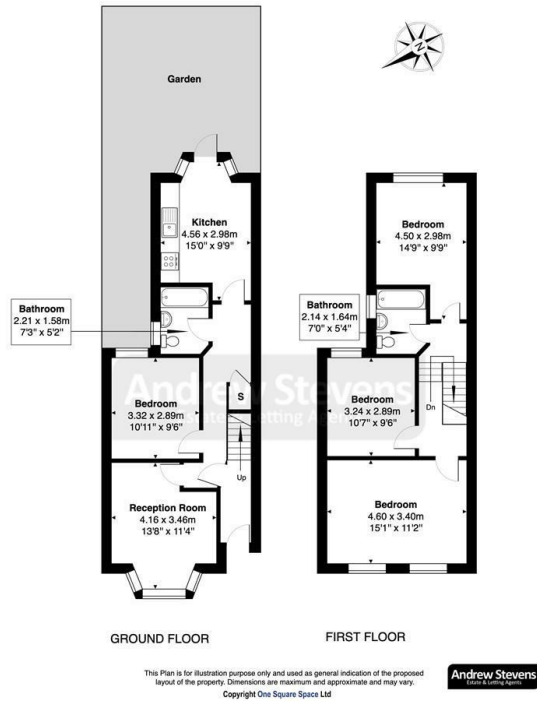
22 Rowley Road, Tottenham, London, N15 3AX

£749,995

- Newly Renovated 4 Bedroom House
- Front and Rear Gardens
- New Fully Fitted Kitchen
- Close to Shops
- 2 Family Bathrooms

22 Rowley Road- N15 3AX

Approximate Gross Internal Area 98.0 m² ... 1054 ft² (excluding garden)



Directions

Viewings

Viewings by arrangement only. Call 020 8363 8888 to make an appointment.

Council Tax Band

D

EPC Rating:

D

Energy Efficiency Rating		
	Current	Potential
Very energy efficient - lower running costs		
(92-plus) A		
(81-91) B		87
(69-80) C		
(55-68) D	64	
(39-54) E		
(21-38) F		
(1-20) G		
Not energy efficient - higher running costs		
England & Wales	EU Directive 2002/91/EC	