

Andrew Stevens

Estate & Letting Agents



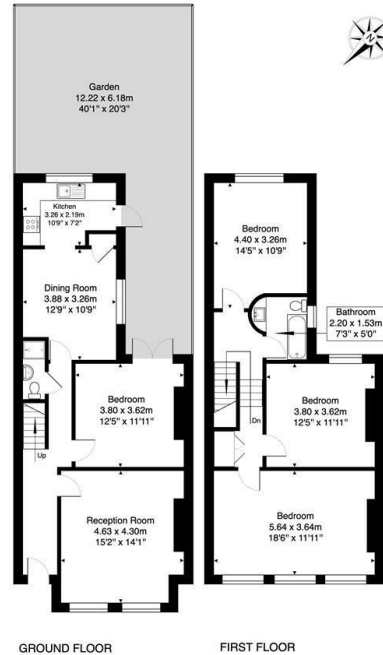
84 St Marks Road, Bush Hill Park, Enfield, EN1 1BB

£545,000

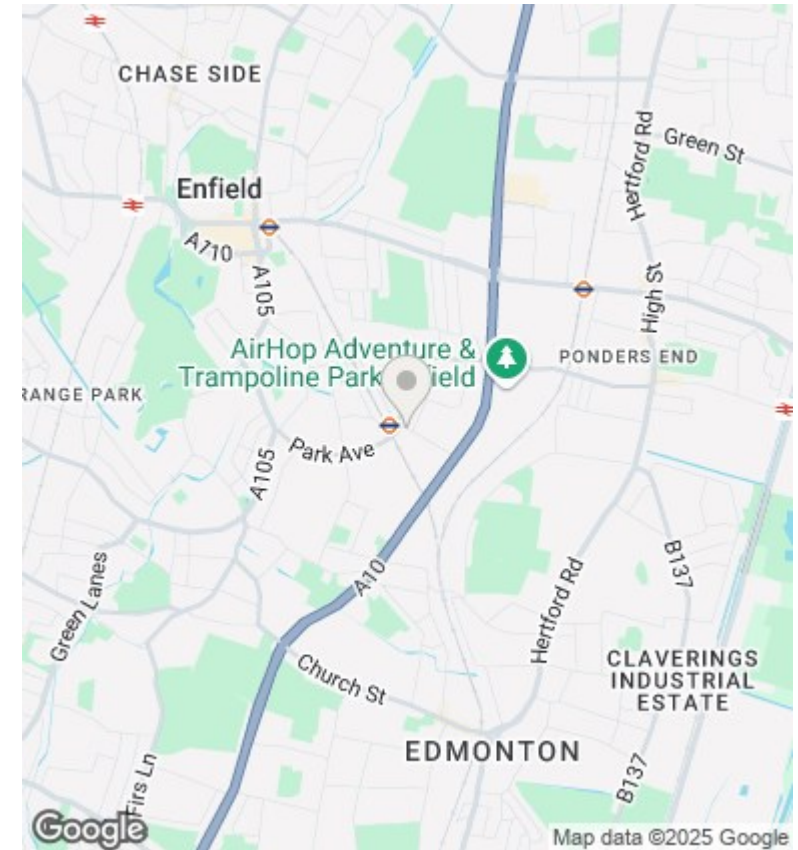
- CHAIN FREE
- Spacious Rooms with High Ceilings
- 3 Receptions
- 3 Double Bedrooms
- Catchment Area for Outstanding Schools
- Stone Throw Away from Bush Hill Park Station

84 St Marks Road- EN1 1BB

Approximate Gross Internal Area 128.7 m² ... 1386 ft²



This Plan is for illustration purpose only and used as general indication of the proposed layout of the property. Dimensions are maximum and approximate and may vary.



Directions

Viewings

Viewings by arrangement only. Call 020 8363 8888 to make an appointment.

Council Tax Band

F

EPC Rating:

E

Energy Efficiency Rating		
	Current	Potential
Very energy efficient - lower running costs		
(92 plus) A		
(81-91) B		83
(69-80) C		
(55-68) D		
(39-54) E	44	
(21-38) F		
(1-20) G		
Not energy efficient - higher running costs		
England & Wales		EU Directive 2002/91/EC