

Andrew Stevens

Estate & Letting Agents



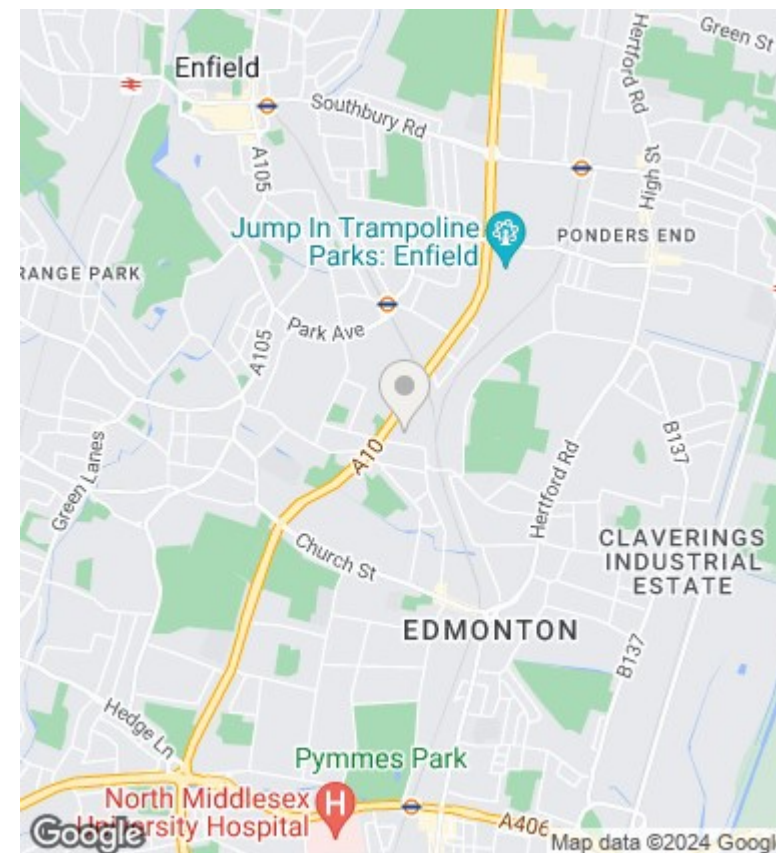
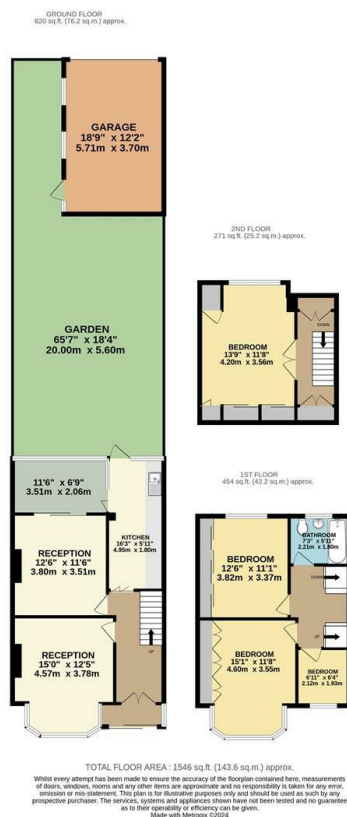
8 Edward Close, Edmonton, London, N9 9JH

£519,995

- CHAIN FREE
- House Situated over 3 floors
- Secluded Garden with Rear Garage
- 4 Bedroom House
- Cul-de-Sac
- Loft conversion
- Separate Dining Room
- Within Walking Distance of Latymer Secondary School
- Double Glazed Windows Throughout

127 St Marks Road, Bush Hill Park, EN1 1BJ
020 8363 8888

info@andrew-stevens.co.uk
www.andrew-stevens.co.uk



Directions

Viewings

Viewings by arrangement only. Call 020 8363 8888 to make an appointment.

Council Tax Band

D

EPC Rating:

D

Energy Efficiency Rating		Current	Potential
<i>Very energy efficient - lower running costs</i>			
(92 plus)	A		84
(81-91)	B		
(69-80)	C		
(55-68)	D	59	
(39-54)	E		
(21-38)	F		
(1-20)	G		
<i>Not energy efficient - higher running costs</i>			
England & Wales		EU Directive 2002/91/EC	