



30 Cumberland Street
Woodbridge | Suffolk | IP12 1AD

£ 1,075,000 Freehold Guide Price

FINE & COUNTRY



30 Cumberland Street

An impressive, double fronted, Grade II listed, detached home constructed in the late 18th century in a prestigious position in the heart of the Conservation Area of Woodbridge.

The L-shaped layout of the ground floor provides generous, interconnected space for entertaining. There are four double bedrooms set across two floors as well as a garage and off-road parking.

Original features have been retained to complement the contemporary fixtures. Fabulous views of St Mary's Church and the Abbey and a mature garden with patio areas complete this desirable property.





The front door opens to the central staircase and reception area which spans the full width of the front of the house.

Living Room

A welcoming space with original pine flooring, feature fireplace alcove and sash window to the front. Fitted oak shelves. Understairs cupboard. Step down and opening to the kitchen.



Sitting Room

A warm room with new solid oak floor and Jotul wood burner in the fireplace. There are two bespoke display cabinets with concealed lighting in the alcoves to either side of the fireplace. Sash window to the front. Door to dining room.







Kitchen

The pitched wooden ceiling with roof lights and French doors opening on to the terrace make this a light and airy room.

Bespoke James Hardy painted wooden base and eye level cabinets. A double Belfast style sink is set in to the natural Verdi Ardesia limestone work surface which has matching splashback. The Worcester boiler is concealed in a matching cabinet. Gas-fired Esse range cooker with two ovens and two hobs; Esse Plus2 electric cooker with two ovens and two gas hobs. Space for fridge/freezer. Integrated Miele dishwasher.



The central island has a granite worktop with space for high stools - this may not be included in the sale.

Dining Room

A triple-glazed, light room ideal for dining and entertaining with a beautiful view of the garden and church beyond.

There are built in cabinets with Verdi Ardesia limestone work surfaces and two integrated Miele wine fridges. Decorative Moroccan tiled floor with underfloor heating. Double bi-fold doors open on to the garden patio.



The back door opens in to the lobby area where there is a matching storage cabinet and a traditional herringbone red brick floor. Opening and step up to

Study

New solid oak floor and window overlooking the garden. Built-in oak bookcase and space for a desk and further storage.



Cloakroom

Cloakroom with vanity unit, back-to-wall toilet and wash basin with tiled splashback. Double doors conceal space for washing machine, hanging space and storage. Underfloor heating.



Carpeted stairs with rope bannister lead to the first floor landing with doors to

Bedroom

A dual aspect, double room with windows to the front and rear. Two original built-in cupboards.

Bedroom

A dual aspect, double room with windows to the front and rear. Two original built-in cupboards.



Family Bathroom

Walk-in shower with curved glass screen, basin in vanity storage cupboard, concealed cistern WC and further matching cupboard with mirror over. Underfloor heated tiled floor with matching tiled worktop and splashback.



Stairs to second floor landing with large dormer window providing a notable view of the church across the lawns of the Abbey School.

Bedroom

This double room has a pitched wooden ceiling and dormer window with a view of Cumberland Street. Built-in eaves storage to both sides.





Bedroom

This double room has a pitched wooden ceiling and dormer window with a view of Cumberland Street. Built-in eaves storage to both sides.

Bathroom

A cleverly designed bathroom with a pitched ceiling. Full-length bath and built-in cabinet housing the basin and concealed cistern WC. Underfloor heated tiled floor with matching splashback.





Outside

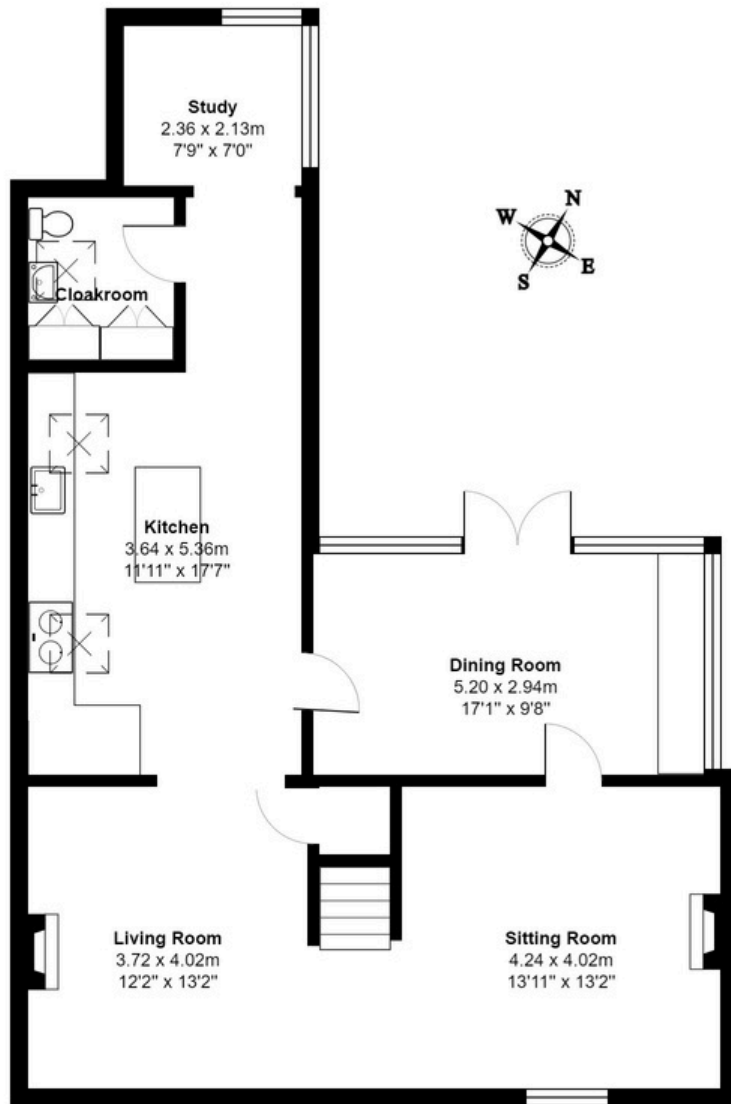
The good-sized, mature garden is neatly laid to lawn with curved flowerbeds and raised vegetable patch. There are brick and paved patio areas ideal for al fresco dining and lounging.

Original crinkle-crankle red brick wall to the perimeter. The rear outlook is of mature trees, St. Mary's church and the Abbey school, formerly the town house of Thomas Seckford, Woodbridge's Elizabethan benefactor.

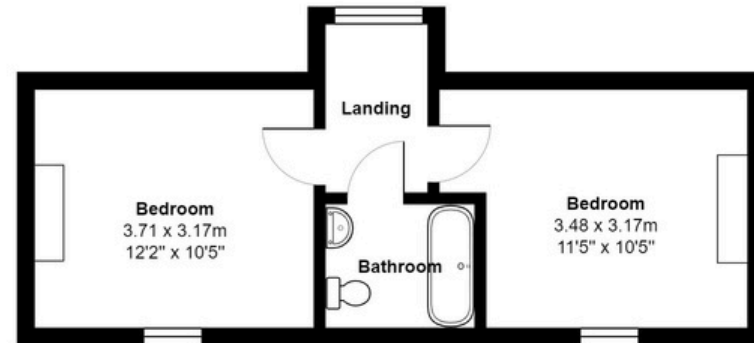


A further benefit of this property is the large garage and car parking space in adjacent Turn Lane, just 30 seconds walk from the house.

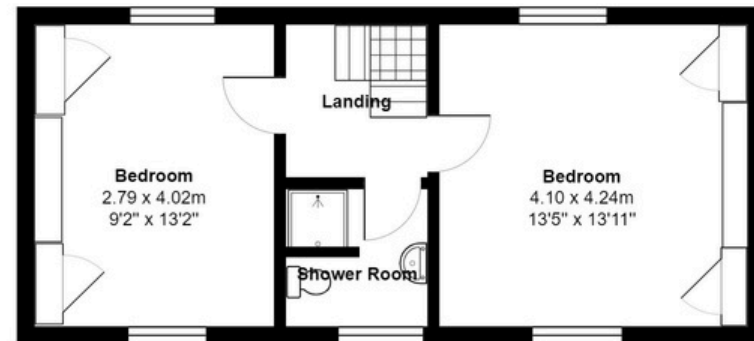




Ground Floor
Area: 87.7 m² ... 944 ft²



Second Floor
Area: 31.3 m² ... 337 ft²



First Floor
Area: 38.2 m² ... 411 ft²

Total Area: 157.1 m² ... 1691 ft²

All measurements are approximate and for display purposes only

Suffolk County Properties Ltd trading as Fine & Country Woodbridge
Registered in England and Wales. Company reg. No. 05861438
Registered address: Crane Court, 302 London Road, Ipswich, Suffolk, IP2 0JA
Copyright 2022 Fine & Country Ltd



Agents notes: All measurements are approximate and for general guidance only and whilst every attempt has been made to ensure accuracy, they must not be relied on. The fixtures, fittings and appliances referred to have not been tested and therefore no guarantee can be given that they are in working order. Internal photographs are reproduced for general information and it must not be inferred that any item shown is included with the property. For a free valuation, contact the numbers listed on the brochure.



Services

We are advised by the vendors that mains electricity, water and drainage are connected. The property benefits from gas-fired central heating. There is underfloor heating in the downstairs cloakroom, conservatory and the two family bathrooms.

Possession

Vacant possession upon completion.

Council Tax Band

East Suffolk - Band F - 2024/25 - £ 3148.24

What Three Words

///nation.decades.argue

Viewing strictly by appointment with

Fine & Country Woodbridge - 01394 446007

Out of hours -

Mark Halls MRICS FNAEA CREA -

Managing Director - 07770 814 748

About The Area

Woodbridge is a much sought-after market town located close to the Suffolk Heritage Coast on the banks of the beautiful River Deben. The town is widely known for its' beautiful historic buildings and wide-ranging amenities which include a library, two theatres, a cinema, numerous sports facilities (including sailing, rowing, tennis, bowls, rugby, and football clubs), dentists and doctors' surgeries, and a selection of highly reputable schools.

There are spectacular riverside walks from the heart of the town and Woodbridge is well placed for visiting some of the county's best-loved attractions such as Orford and Framlingham Castles, Sutton Hoo, Aldeburgh, Southwold, and the world-renowned Concert Hall at Snape Maltings. For lovers of the outdoors and nature, nearby attractions included RSPB Minsmere, Shingle Street, the forests at Rendlesham, and the foot ferries at Bawdsey and Butley.

Rail Services

Woodbridge station is on the Ipswich-Lowestoft East Suffolk Line with connections via Ipswich to London Liverpool Street. Ipswich station is on the Greater Anglia Main Line, approximately 70 miles east of London Liverpool Street Station with a journey time from Ipswich of approximately 1 hour and 10 minutes.



Fine & Country Woodbridge
28 Church Street, Woodbridge, Suffolk IP12 1DH
01394 446 007 | woodbridge@fineandcountry.com

THE FINE & COUNTRY
FOUNDATION

FIGHTING HOMELESSNESS

If you would like to make a donation to the Fine and Country Foundation, please visit: fineandcountry.com/uk/foundation

The central island has a granite worktop with space for high stools - this may not be included in the sale.

The central island has a granite worktop with space for high stools - this may not be included in the sale.

The central island has a granite worktop with space for high stools - this may not be included in the sale.

The central island has a granite worktop with space for high stools - this may not be included in the sale.

The central island has a granite worktop with space for high stools - this may not be included in the sale.

The central island has a granite worktop with space for high stools - this may not be included in the sale.

The central island has a granite worktop with space for high stools - this may not be included in the sale.

The central island has a granite worktop with space for high stools - this may not be included in the sale.