



51 St. Bernards Road, Shirehampton, BS11 9UN

£390,000

GOODMAN
& LILLEY



THE INDEPENDENT SALES, LETTINGS & LAND AGENTS

51 St. Bernards Road, Shirehampton, BS11 9UN

Set on a quiet residential street in ever-popular Shirehampton, this attractive red-brick semi-detached home offers flexible family living across three floors. Inside, you'll find a bright and welcoming layout, with two reception rooms, a well-fitted kitchen, and practical pantry.

Upstairs, the home features three well-proportioned bedrooms. The standout top-floor loft conversion includes an en suite and far-reaching views towards Pill – perfect as a main suite or guest space. The original third bedroom now serves as a dedicated home office and cleverly incorporates the stairs to the loft.

The garden is a real highlight – a wrap-around, south/west-facing plot that gets the sun for most of the day, ideal for entertaining or relaxing. The front garden is private thanks to tall hedging, with scope to convert to parking if desired (subject to the necessary permissions).

Located within walking distance of Shirehampton’s shops, schools, and amenities, and just moments from local green spaces and excellent transport links – this property offers the perfect balance of suburban comfort and city accessibility.

- No onward chain
- Attractive red-brick semi-detached home with fantastic curb appeal
- Three good-sized bedrooms, including a loft room with en suite and views over to Pill
- Private front garden with potential for off-street parking (subject to consent)
- Bright and versatile home office space (formerly the third bedroom)
- Spacious lounge and separate dining room
- Short walk to Shirehampton Village,

- local shops, and green space at King Weston House Estate
- Excellent transport links via the Portway and nearby train station into Bristol

Kitchen

6'6" x 16'0"
uPVC double glazed window and door to rear aspect, a mixture of eye level and low level storage units with roll top work surfaces over, raised oven, built in fridge and freezer, electric hob with extractor over, 1 & 1/2 sink with swan neck mixer tap over and drainer, space for dishwasher, door to pantry, under stairs storage.

Lounge

14'8" x 14'4"
uPVC double glazed windows to front and side aspect, chimney breast, storage cupboard, radiator.

Dining Room

11'4" x 10'4"
uPVC double glazed window to front and side aspect, chimney breast, radiator.

Study

12'10" x 6'5"
uPVC double glazed window to front aspect, radiator.

Bedroom 1

9'3" x 13'5"
Two uPVC double glazed skylights to rear aspect, radiator.

Shower Room

uPVC double glazed sky light to rear aspect, low level toilet, hand wash basin and shower, radiator.

Bedroom 2

12'8" x 10'4"
uPVC double glazed window to front and side aspect, chimney breast, radiator.

Bedroom 3

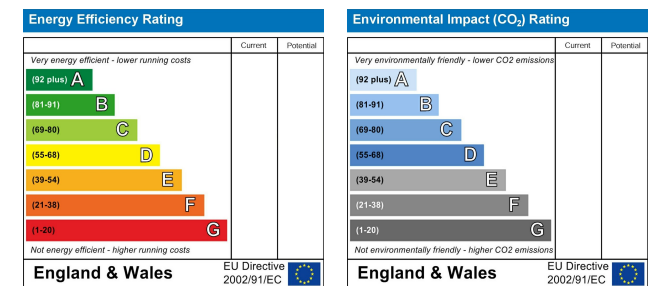
13'6" x 11'2"
uPVC double glazed window to front and side aspect, chimney breast, storage cupboards, radiator.

Bathroom

uPVC double glazed window to rear aspect, fully tiled bathroom with panel bath and shower over, low level toilet and handwash basin, heated towel rail.

Gardens

Gated access to double front gardens, path leading to front door and on to the rear garden. The rear garden is mainly laid to lawn with a patio area and boarded by shrubs.

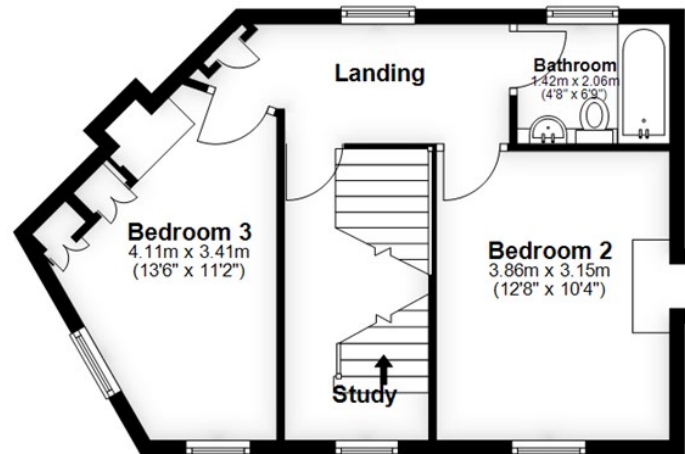


Bristol
9 High Street, Shirehampton
Bristol BS11 0DT
01172 130333
www.goodmanlilley.co.uk



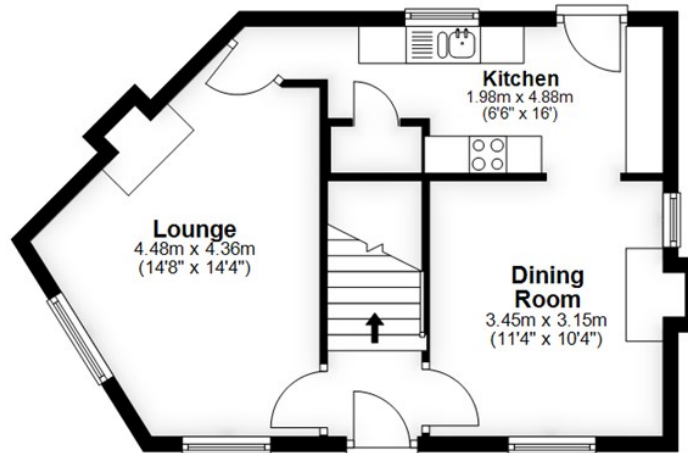
First Floor

Approx. 41.5 sq. metres (447.0 sq. feet)



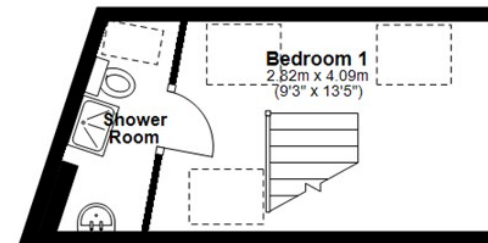
Ground Floor

Approx. 40.9 sq. metres (439.8 sq. feet)



Second Floor

Approx. 15.9 sq. metres (170.9 sq. feet)



Total area: approx. 98.3 sq. metres (1057.6 sq. feet)



PrimeLocation.com



rightmove.co.uk



These particulars are for general guidance only. They do not form or constitute any part of an offer or contract. Goodman & Lilley has not carried out structural surveys of the property. The services, appliances or specific fittings mentioned in these details have not been tested. Every attempt is made to ensure accuracy, however all photographs, measurements, floor plans and distances are for illustrative purposes only. They must not be relied upon when purchasing carpets and or other fixtures and fittings. Lease details, service charges and ground rents are given as a guide only. They should be checked and confirmed by a licensed solicitor prior to exchange of contracts. The copyright of all details, photographs and floor plans remain exclusive to Goodman & Lilley.

www.goodmanlilley.co.uk