



39 KINGS WESTON AVENUE,
SHIREHAMPTON, BS11 0AQ

GOODMAN
& LILLEY



CHARMING 1950S TWO-BEDROOM END-OF-TERRACE WITH GARAGE, GARDEN & EXCELLENT TRANSPORT LINKS

Porch

Two uPVC double glazed windows to side aspect, wooden front door to front aspect, door leading to lounge and stairs leading to first floor, radiator.

Living Room

uPVC double glazed window to front aspect, stone fireplace with feature electric wood burner, faux beam, radiator.

Kitchen

uPVC double glazed window to side and rear aspect, a mixture of eye level and low level storage units with roll top work surfaces over, stainless steel sink with mixer tap and drainer, electric oven and hob, metro tile splash back, faux beams, radiator, understairs storage.

Conservatory

uPVC double glazed windows to rear and side aspects, uPVC door leading to garden, radiator.

Garage

Up and over door, off street parking.

Bedroom 1

uPVC double glazed window to front aspect, storage cupboard, radiator, pull down ladder to loft space that is currently being used as a hobby area/storage.

Bedroom 2

uPVC double glazed window to rear aspect, fitted storage cupboards/wardrobes, radiator.

Bathroom

uPVC double glazed window to rear aspect, half tiled, low level toilet with handle flush, victorian style hand wash basin, panel bath with electric shower over, radiator.

Gardens

The front garden is gated with a path leading to the front door and side access.

The rear garden has a patio and lawned area and leads to a separate garage and parking.

- End of Terrace
 - Off street parking
 - Conservatory
 - Front and rear garden
- Detached garage
 - Kitchen/diner
 - Entrance porch
 - Convenient transport links

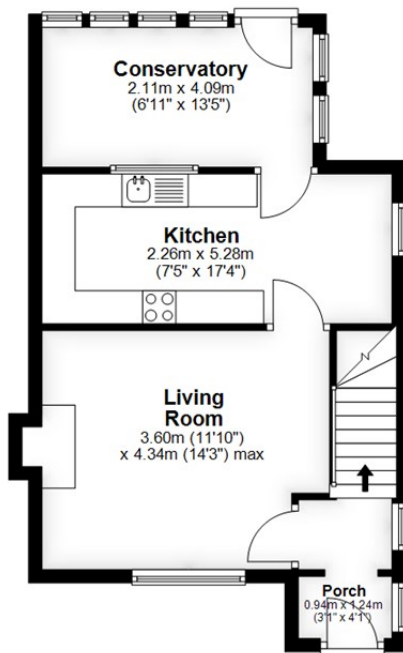
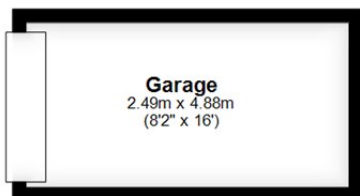


GUIDE PRICE £285,000



Ground Floor

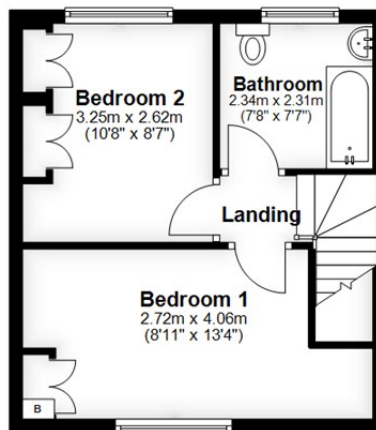
Approx. 54.0 sq. metres (581.2 sq. feet)



Total area: approx. 81.7 sq. metres (879.7 sq. feet)

First Floor

Approx. 27.7 sq. metres (298.5 sq. feet)



HENLEAZE - 0117 2130777
henleaze@goodmanlilley.co.uk

PORTISHEAD - 01275 430440
sales@goodmanlilley.co.uk

SHIREHAMPTON - 0117 2130333
shire@goodmanlilley.co.uk

Zoopla.co.uk

rightmove



WWW.GOODMANLILLEY.CO.UK

These particulars are for general guidance only. They do not form or constitute any part of an offer or contract. Goodman & Lilley has not carried out structural surveys of the property. The services, appliances or specific fittings mentioned in these details have not been tested. Every attempt is made to ensure accuracy, however all photographs, measurements, floor plans and distances are for illustrative purposes only. They must not be relied upon when purchasing carpets and or other fixtures & fittings. Lease details, service charges and ground rents are given as a guide only. They should be checked and confirmed by a licensed solicitor prior to exchange of contracts. The copyright of all details, photographs and floor plans remain exclusive to Goodman & Lilley.