



57 SPRINGFIELD AVENUE,
SHIREHAMPTON, BS11 9TG

GOODMAN
& LILLEY



NESTLED ON THE DESIRABLE SPRINGFIELD AVENUE IN SHIREHAMPTON, BRISTOL, THIS CHARMING THREE-BEDROOM SEMI-DETACHED HOUSE PRESENTS AN EXCELLENT OPPORTUNITY FOR FAMILIES SEEKING A WELCOMING HOME. OFFERED WITH NO ONWARD CHAIN, THE PROPERTY IS IN GOOD CONDITION AND BOASTS A PRIME LOCATION DIRECTLY OPPOSITE A LOVELY PARK, MAKING IT IDEAL FOR OUTDOOR ACTIVITIES AND FAMILY ENJOYMENT.

Entrance Hallway

Entrance via uPVC double glazed door into hallway, radiator, stairs rising to first floor.

Lounge

uPVC double glazed widow to front aspect, uPVC double glazed patio doors into rear garden. Fireplace with log burner, laminate flooring, radiator.

Kitchen/Diner

uPVC double glazed window to front, back and side aspect. Fitted with a range of wall and base units with roll top work surfaces. Stainless steel sink with mixer tap over, electric hob and oven with stainless steel extractor hood over, space for dish washer, plumbing for the washing machine, radiator.

Downstairs W/C

uPVC double glazed window to rear, low level toilet with push button flush, hand wash basin with tiled splash back.

Bedroom One

uPVC double glazed windows to front and rear aspects. radiator and built in cupboard.

Bedroom Two

Two uPVC double glazed windows to front aspect, radiator, cupboard housing combi-boiler.

Bedroom Three

uPVC double glazed window to rear aspect, radiator.

Bathroom

uPVC double glazed window to rear aspect, panel bath with shower over, low level toilet, pedestal hand wash basin, radiator.

Gardens

There is parking to the front of the property for two vehicles. The garden to the rear of the property boasts a lovely decking area, a large shingle area which leads down to the bottom of the garden which has a green house and raised bed.

- Semi detached home
 - Bright kitchen/diner
 - Spacious lounge with log burner
 - Off street parking
- No onward chain
 - Downstairs WC
 - Southerly facing garden
 - Conveniently positioned

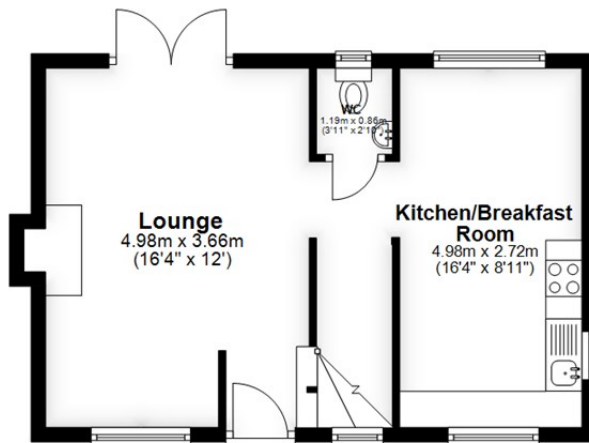


£325,000



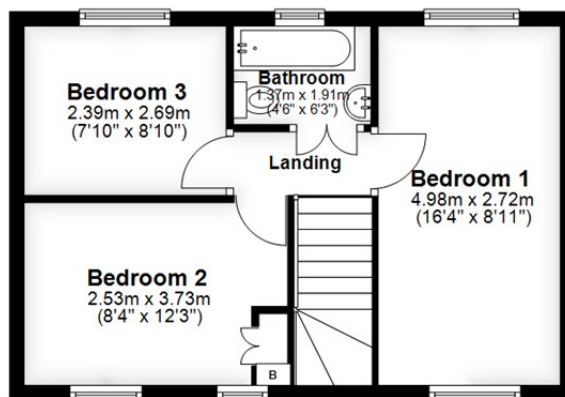
Ground Floor

Approx. 37.7 sq. metres (406.2 sq. feet)



First Floor

Approx. 38.0 sq. metres (409.1 sq. feet)



Total area: approx. 75.7 sq. metres (815.3 sq. feet)

HENLEAZE - 0117 2130777
henleaze@goodmanlilley.co.uk

PORTISHEAD - 01275 430440
sales@goodmanlilley.co.uk

SHIREHAMPTON - 0117 2130333
shire@goodmanlilley.co.uk

Zoopla.co.uk

rightmove



WWW.GOODMANLILLEY.CO.UK

These particulars are for general guidance only. They do not form or constitute any part of an offer or contract. Goodman & Lilley has not carried out structural surveys of the property. The services, appliances or specific fittings mentioned in these details have not been tested. Every attempt is made to ensure accuracy, however all photographs, measurements, floor plans and distances are for illustrative purposes only. They must not be relied upon when purchasing carpets and or other fixtures & fittings. Lease details, service charges and ground rents are given as a guide only. They should be checked and confirmed by a licensed solicitor prior to exchange of contracts. The copyright of all details, photographs and floor plans remain exclusive to Goodman & Lilley.