



70 BRADLEY CRESCENT,
BRISTOL, BS11 9SN

GOODMAN
& LILLEY



POSITIONED IN THE CHARMING LOCALE OF BRADLEY CRESCENT, SHIREHAMPTON, BRISTOL, THIS DELIGHTFUL TWO-BEDROOM PERIOD PROPERTY IS NOW AVAILABLE FOR IMMEDIATE VIEWINGS AND COMES WITH THE ADDED BENEFIT OF NO ONWARD CHAIN. THIS HOUSE PRESENTS AN EXCELLENT OPPORTUNITY FOR FIRST-TIME BUYERS, INVESTORS, OR ANYONE SEEKING TO RESIDE IN A VIBRANT COMMUNITY.

Lounge

Window to front, fireplace, stairs, open plan, door to:

Kitchen/Diner

Window to rear, fireplace, double door, door.

Bedroom 1

Two windows to front, fireplace, Storage cupboard, sliding door, door to:

Shower Room

Window to rear, door to:

Bedroom 2

Window to rear, door to:

- No onward chain
- 2 double bedrooms
- Low maintenance garden
- Fantastic transport links
- Ready to view immediately
- Open plan kitchen/diner
- Period home
- Village location

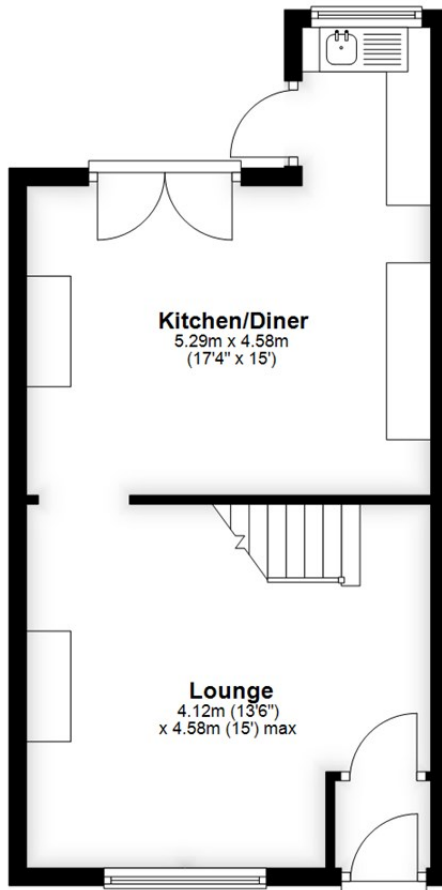


OFFERS IN THE REGION OF £260,000



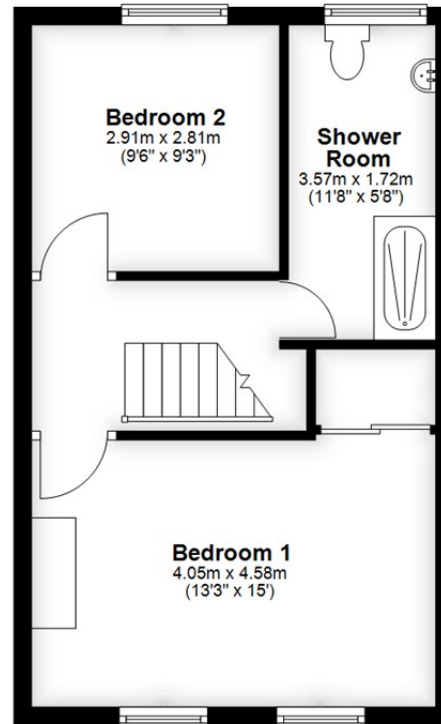
Ground Floor

Approx. 37.9 sq. metres (408.1 sq. feet)



First Floor

Approx. 34.5 sq. metres (371.4 sq. feet)



Total area: approx. 72.4 sq. metres (779.5 sq. feet)

HENLEAZE - 0117 2130777
henleaze@goodmanlilley.co.uk

PORTISHEAD - 01275 430440
sales@goodmanlilley.co.uk

SHIREHAMPTON - 0117 2130333
shire@goodmanlilley.co.uk

Zoopla.co.uk

rightmove



WWW.GOODMANLILLEY.CO.UK

These particulars are for general guidance only. They do not form or constitute any part of an offer or contract. Goodman & Lilley has not carried out structural surveys of the property. The services, appliances or specific fittings mentioned in these details have not been tested. Every attempt is made to ensure accuracy, however all photographs, measurements, floor plans and distances are for illustrative purposes only. They must not be relied upon when purchasing carpets and or other fixtures & fittings. Lease details, service charges and ground rents are given as a guide only. They should be checked and confirmed by a licensed solicitor prior to exchange of contracts. The copyright of all details, photographs and floor plans remain exclusive to Goodman & Lilley.