



26 MARSH STREET,
AVONMOUTH, BS11 9JZ

GOODMAN
& LILLEY



Entrance Hall

Entrance via uPVC hardwood security door with side uPVC double glazed window to front aspect, radiator, understairs cupboard, stairs rising to first floor.

Dining Room

uPVC double glazed boxed bay window to front aspect, feature fireplace, radiator, laminate flooring.

Lounge

Two uPVC double glazed windows to rear aspect, uPVC double glazed patio doors leading into the rear garden, radiator.

Kitchen

uPVC double glazed window to rear aspect. Fitted with a range of wall and base units with roll top work surfaces. Electric oven, gas hob with extractor over, opening into rear lobby.

Lobby

uPVC double glazed window to side aspect, stainless steel sink with mixer tap over, uPVC double glazed door leading into the rear garden. Plumbing for washing machine, doors to storage and W/C

WC

Low level wc, wash hand basin, radiator.

First Floor Landing

Radiator, access to loft space.

Shower Room

uPVC double glazed window to rear aspect, shower cubicle, low level wc, pedestal sink in vanity unit, fully tiled.

Bedroom 1

uPVC double glazed window to rear aspect, fitted wardrobes, cupboard housing Combi-Boiler, radiator

Bedroom 2

uPVC double glazed window to front aspect, fitted wardrobes, fireplace, radiator

Bedroom 3

uPVC double glazed window to front aspect, radiator.

Gardens

There are good size gardens to the rear of the property. There is a large lawned area, a garden shed, a good size patio area and side access.

Parking

There is dual parking to the front and an EV charger installed.

-
- End of Terrace House
 - Downstairs W/C
 - Gardens backing on to Green Space
 - Combi Boiler
 - Off Street Parking
 - 3 Bedrooms
 - Solar Panels
 - Village Location

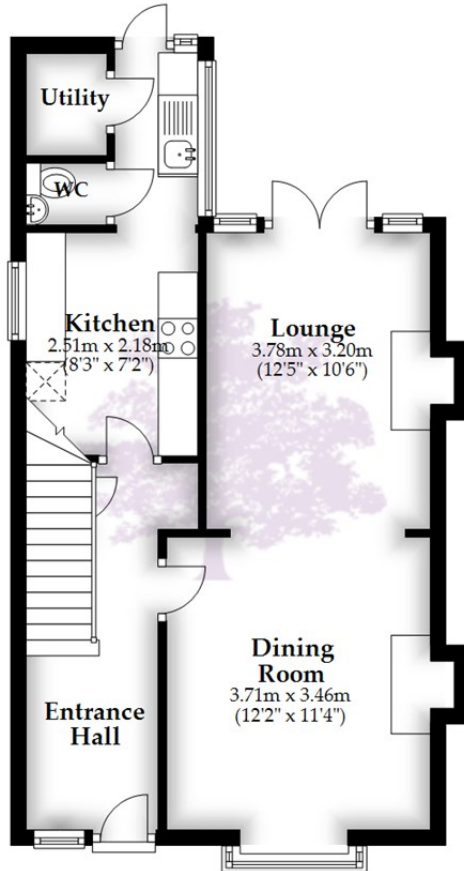


£280,000



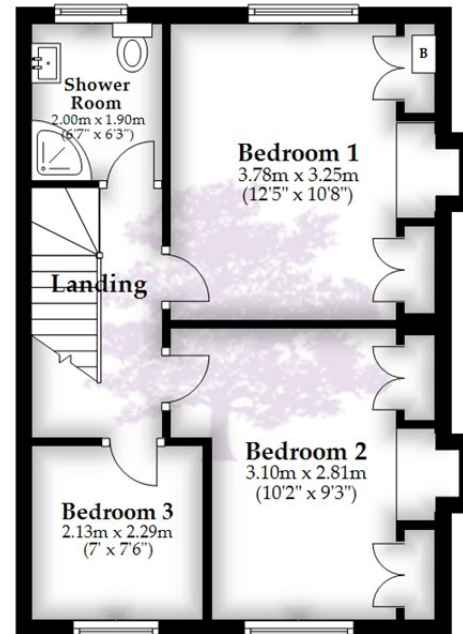
Ground Floor

Approx. 44.7 sq. metres (481.1 sq. feet)



First Floor

Approx. 39.1 sq. metres (420.3 sq. feet)



Total area: approx. 83.7 sq. metres (901.4 sq. feet)

Whilst every attempt has been made to ensure accuracy of the floor plan all measurements are approximate and no responsibility is taken for any error, omission or measurement.

Plan produced using PlanUp.

HENLEAZE - 0117 2130777
henleaze@goodmanlilley.co.uk

PORTISHEAD - 01275 430440
sales@goodmanlilley.co.uk

SHIREHAMPTON - 0117 2130333
shire@goodmanlilley.co.uk

[Zoopla.co.uk](https://www.zoopla.co.uk)

[rightmove](https://www.rightmove.co.uk)



[WWW.GOODMANLILLEY.CO.UK](https://www.GOODMANLILLEY.CO.UK)

These particulars are for general guidance only. They do not form or constitute any part of an offer or contract. Goodman & Lilley has not carried out structural surveys of the property. The services, appliances or specific fittings mentioned in these details have not been tested. Every attempt is made to ensure accuracy, however all photographs, measurements, floor plans and distances are for illustrative purposes only. They must not be relied upon when purchasing carpets and or other fixtures & fittings. Lease details, service charges and ground rents are given as a guide only. They should be checked and confirmed by a licensed solicitor prior to exchange of contracts. The copyright of all details, photographs and floor plans remain exclusive to Goodman & Lilley.