



113 BRADLEY CRESCENT,
SHIREHAMPTON, BS11 9SS

GOODMAN
& LILLEY



NESTLED IN THE CHARMING AREA OF SHIREHAMPTON, BRISTOL, THIS DELIGHTFUL TERRACED HOUSE ON BRADLEY CRESCENT PRESENTS AN EXCEPTIONAL OPPORTUNITY FOR THOSE SEEKING A BLEND OF MODERN LIVING AND PERIOD CHARM. WITH NO ONWARD CHAIN, THIS TWO DOUBLE BEDROOM PROPERTY IS READY FOR YOU TO MAKE IT YOUR OWN.

Entrance Vestibule

Contemporary tiled flooring leading into hallway.

Hallway

Exposed floorboards leading to all doors to ground floor rooms and stairs leading to first floor.

Lounge

uPVC double glazed windows to front aspect, radiator, ornate feature fireplace and exposed floorboards

Family Room

Ornate feature fireplace, under stairs cupboard, opening into kitchen, exposed floorboards.

Kitchen

uPVC double glazed window and door to rear aspect, fitted with a range of wall and base units with marble work surfaces. 1 and half kitchen sink with swan neck mixer tap over, Integrated dishwasher, induction hob over oven with extractor fan and tiled splash back, pull out larder, built in fridge and freezer, cupboard housing washing machine and combi boiler.

First Floor Landing

Folding step ladder access to a fantastic sized loft space

Bedroom 1

uPVC double glazed window to front aspect, radiator.

Bedroom 2

uPVC double glazed window to rear aspect, radiator.

Bathroom

uPVC double glazed frosted window to rear aspect. Panel bath with mixer tap over, separate shower cubicle, pedestal sink, low level wc

Rear Garden

Low maintenance rear garden with rear access. Decking, space for storage and artificial grass area.

-
- No onward chain
 - High spec kitchen with marble top work surfaces
 - Feature fireplaces
 - Popular village location
- Open plan living
 - characterful exposed floorboards
 - Two double bedrooms
 - Low Maintenance garden with rear access.

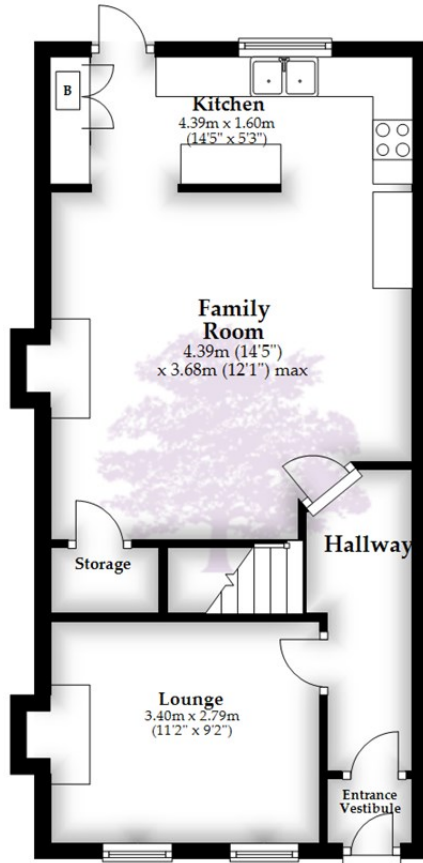


OFFERS IN EXCESS OF £300,000



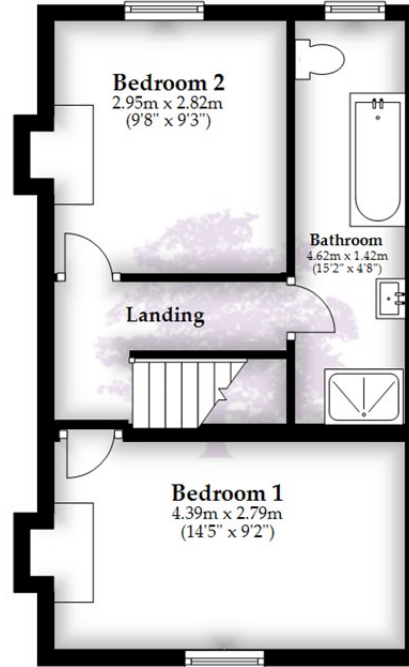
Ground Floor

Approx. -0.6 sq. metres (-6.2 sq. feet)



First Floor

Approx. 33.3 sq. metres (358.1 sq. feet)



Total area: approx. 32.7 sq. metres (351.9 sq. feet)

Whilst every attempt has been made to ensure accuracy of the floor plan all measurements are approximate and no responsibility is taken for any error, omission or measurement.

Plan produced using PlanUp.

HENLEAZE - 0117 2130777
henleaze@goodmanlilley.co.uk

PORTISHEAD - 01275 430440
sales@goodmanlilley.co.uk

SHIREHAMPTON - 0117 2130333
shire@goodmanlilley.co.uk

Zoopla.co.uk

rightmove



WWW.GOODMANLILLEY.CO.UK

These particulars are for general guidance only. They do not form or constitute any part of an offer or contract. Goodman & Lilley has not carried out structural surveys of the property. The services, appliances or specific fittings mentioned in these details have not been tested. Every attempt is made to ensure accuracy, however all photographs, measurements, floor plans and distances are for illustrative purposes only. They must not be relied upon when purchasing carpets and or other fixtures & fittings. Lease details, service charges and ground rents are given as a guide only. They should be checked and confirmed by a licensed solicitor prior to exchange of contracts. The copyright of all details, photographs and floor plans remain exclusive to Goodman & Lilley.