



27 MEADOW GROVE,
SHIREHAMPTON, BS11 9PL

**GOODMAN
& LILLEY**



WELCOME TO MEADOW GROVE, SHIREHAMPTON - A CHARMING LOCATION PERFECT FOR FAMILIES! THIS DELIGHTFUL THREE-BEDROOM SEMI-DETACHED HOUSE IS A TRUE GEM. THE PROPERTY BOASTS A LOVELY NEWLY FITTED KITCHEN, IDEAL FOR WHIPPING UP DELICIOUS MEALS FOR YOUR LOVED ONES.

Hallway

Entrance via uPVC door into hallway, stairs rising to first floor.

Lounge

2 uPVC double glazed windows to front aspect, radiator, feature fireplace,

Kitchen

uPVC double glazed window to rear aspect, uPVC door leading to rear garden. Fitted with a range of high gloss wall and base units with work surfaces over. Ceramic hob with stainless steel hood over, electric double oven, integrated fridge and freezer, Integrated dishwasher, ceramic white matching sink with mixer tap over, understairs cupboard, door leading into wc.

WC

Window to rear aspect, low level wc, corner vanity sink.

Landing

uPVC double glazed window to side aspect, access to loft space.

Bedroom 1

Window to front aspect, sliding doors mirrored wardrobes, radiator

Bedroom 2

Window to rear aspect, radiator

Bathroom

Window to rear aspect, panel bath with shower over, pedestal sink, low level wc, heated chrome towel rail, combi-boiler

Bedroom 3

Window to front aspect, radiator, over stairs cupboard

Rear Garden

The rear garden is a good size, there is a large decking area, a large lawned area with mature plants and shrubs, a veggie plot, there is also access to a work shop/storage shed and a fantastic cabin/office

Garden Cabin/Office

uPVC double glazed patio doors and uPVC window to front aspect, there is also power and lighting

Parking

There is parking to the front for 2 vehicles.

-
- 3 Bedroom Semi-Detached
 - Newly Fitted Kitchen
 - Parking to the Front
 - Close to all Transport Links.
 - Lovely Gardens
 - Solar Panels
 - Close to all Amenities
 - Great Family Home

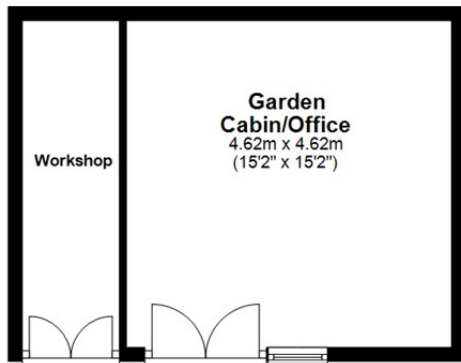


£335,000



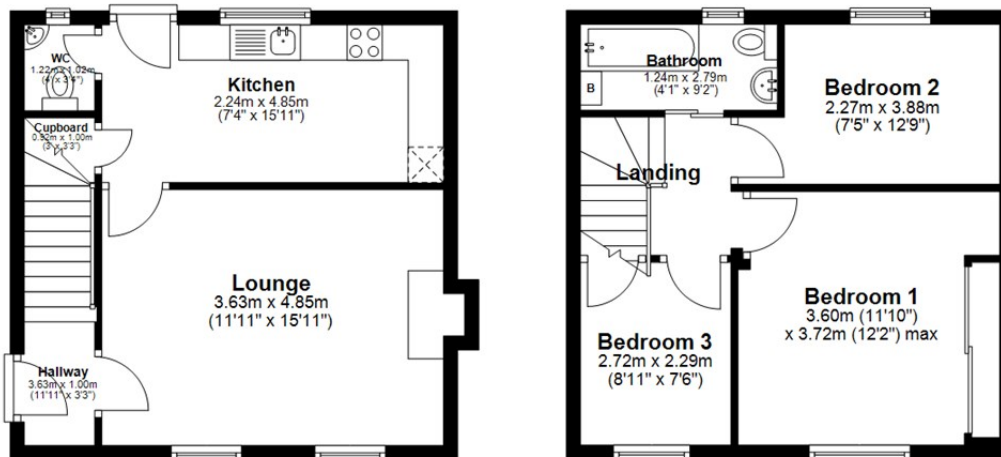
Ground Floor

Approx. 63.7 sq. metres (686.1 sq. feet)



First Floor

Approx. 36.3 sq. metres (390.3 sq. feet)



Total area: approx. 100.0 sq. metres (1076.4 sq. feet)

HENLEAZE - 0117 2130777
henleaze@goodmanlilley.co.uk

PORTISHEAD - 01275 430440
sales@goodmanlilley.co.uk

SHIREHAMPTON - 0117 2130333
shire@goodmanlilley.co.uk

Zoopla.co.uk

rightmove



WWW.GOODMANLILLEY.CO.UK

These particulars are for general guidance only. They do not form or constitute any part of an offer or contract. Goodman & Lilley has not carried out structural surveys of the property. The services, appliances or specific fittings mentioned in these details have not been tested. Every attempt is made to ensure accuracy, however all photographs, measurements, floor plans and distances are for illustrative purposes only. They must not be relied upon when purchasing carpets and or other fixtures & fittings. Lease details, service charges and ground rents are given as a guide only. They should be checked and confirmed by a licensed solicitor prior to exchange of contracts. The copyright of all details, photographs and floor plans remain exclusive to Goodman & Lilley.